

HABITAT MANAGEMENT UNITS (HMUs)

A collection of 27 brochures with maps published ~ October 2011

The Corps manages about 50,000 acres for wildlife habitat purposes within the Walla Walla District area of operations. Many of those habitat management unit lands were acquired and developed under a compensation plan authority to address losses to fish and wildlife resources incurred from the construction and operation of Corps dams on the lower Snake River. HMUs provide habitat for a variety of wildlife species. They also provide fishing, hunting and nature-hiking opportunities for the public. Please, observe all restrictions and safety precautions, and treat each site as if it were your own.

Natural Resources Management Office
Walla Walla District, U.S. Army Corps of Engineers
201 North 3rd Avenue
Walla Walla, WA 99362

509-527-7136
corpsoutdoors@usace.army.mil
www.nww.usace.army.mil
Dam-crossing information: 888-DAM-INFO (888-326-4636)

*additional HMU brochures to be added to this collection as resources become available



US Army Corps of Engineers
BUILDING STRONG[®]



INDEX

- p. 3-4 **Toothaker HMU** – Columbia River Mile 320
- p. 5-6 **Yakima Delta HMU** – Yakima River Mile 1
- p. 7-8 **Charbonneau HMU** – Snake River Mile 11
- p. 9-10 **Big Flat HMU** – Snake River Mile 15
- p. 11-12 **Fishhook HMU** – Snake River Mile 18
- p. 13-14 **Lost Island HMU** – Snake River Mile 19
- p. 15-16 **Hollebeke HMU** – Snake River Mile 25
- p. 17-18 **Snake River Junction HMU** – Snake River Mile 26
- p. 19-20 **Walker HMU** – Snake River Mile 30
- p. 21-22 **Skookum HMU** – Snake River Mile 48
- p. 23-24 **55 Mile HMU** – Snake River Mile 55
- p. 25-26 **Lyons Ferry HMU** – Snake River Mile 59.5
- p. 27-28 **Tucannon HMU** – Snake River Mile 62.5
- p. 29-30 **John Henley HMU** – Snake River Mile 68
- p. 31-32 **Ridpath HMU** – Snake River Mile 76
- p. 33-34 **New York Bar HMU** – Snake River Mile 81
- p. 35-36 **Lower Deadman HMU** – Snake River Mile 83
- p. 37-38 **Central Ferry HMU** – Snake River Mile 83.5
- p. 39-40 **Willow Bar HMU** – Snake River Mile 88
- p. 41-42 **Penawawa HMU** – Snake River Mile 91.5
- p. 43-44 **Rice Bar HMU** – Snake River Mile 93
- p. 45-46 **Swift Bar HMU** – Snake River Mile 97
- p. 47-48 **Illia HMU** – Snake River Mile 102
- p. 49-50 **Kelly Bar HMU** – Snake River Mile 119
- p. 51-52 **Nisqually John HMU** – Snake River Mile 123
- p. 53-54 **Chief Timothy HMU** – Snake River Mile 132.5
- p. 55-56 **Hells Gate HMU** – Snake River Mile 145



Directions

From U.S. Route 395, travel about 10 miles south on state Route 397 (cross the overpass), then travel about 1 mile south on South Piert Road, veering onto Meals Road. Located at Columbia River Mile 320 on the west riverbank of Lake Wallula.

Site Information

Approximately 300 acres, day-use area, fishing, hiking, hunting (shotgun and archery only), bird watching and wildlife viewing.

Rules and Regulations

- Rules and regulations under Title 36 apply on all Corps lands
- All Washington state hunting and fishing regulations are applicable
- Be aware that other visitors may be using hunting areas for different recreational activities
- Authorized vehicles only
- Target, clay pigeon shooting and “plinking” are prohibited
- Pick up your litter when you leave ~ Pack It In, Pack It Out
- Camping and open fires are prohibited
- Park in designated parking areas
- Visitors are responsible for recognizing private land boundaries



Contact Information

Natural Resources Management Office
Ice Harbor Lock and Dam
U.S. Army Corps of Engineers
2339 Monument Drive
Burbank, WA 99323

Phone: 509-547-2048

E-mail: corpsoutdoors@usace.army.mil

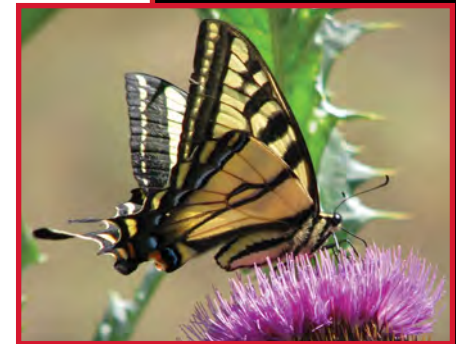
Website: www.nww.usace.army.mil

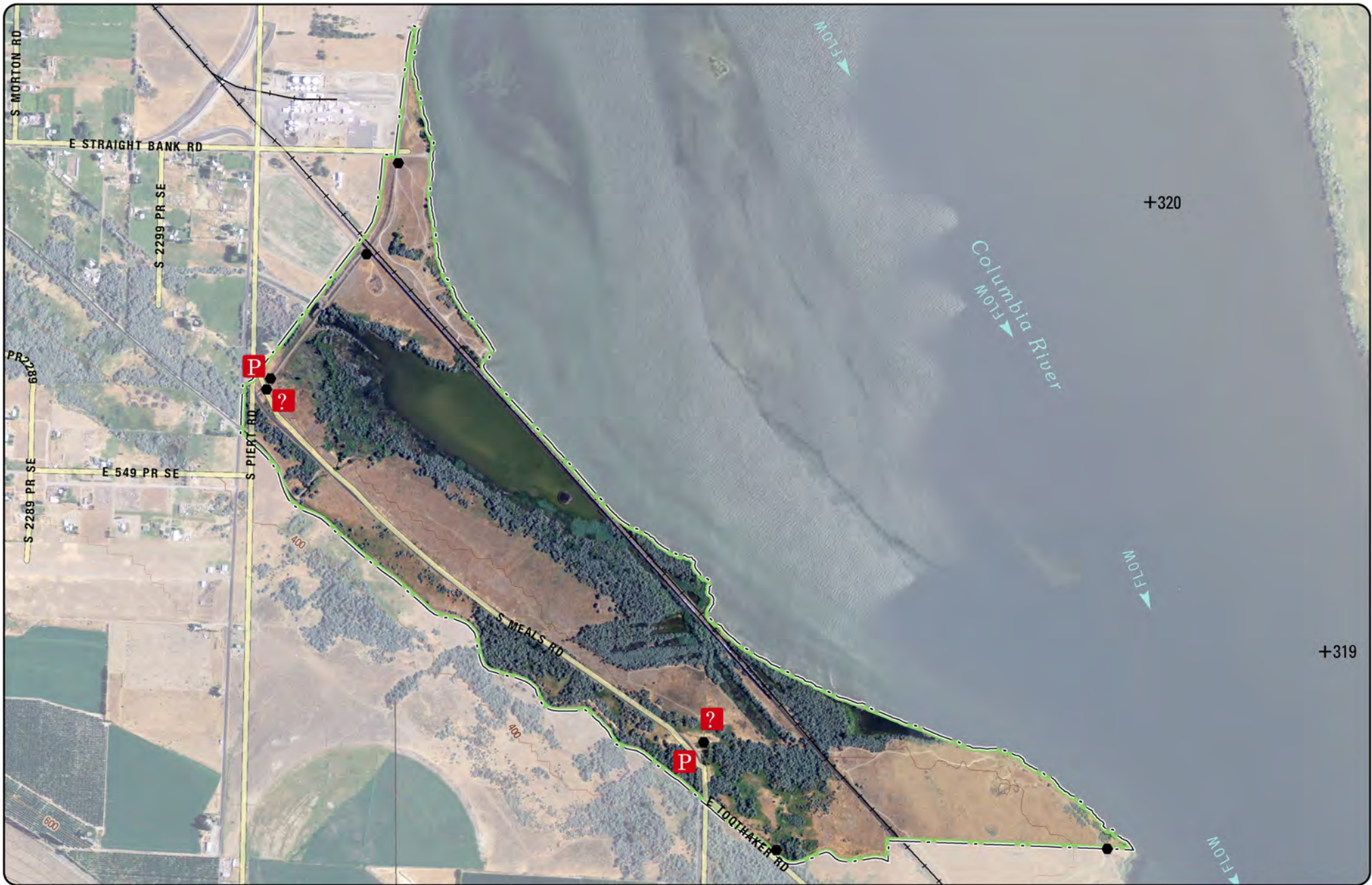
Dam-crossing information:
888-DAM-INFO (888-326-4636)

 www.facebook.com/wallawallausace



**US Army Corps
of Engineers®**

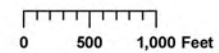




Toothaker Habitat Management Unit

US Army Corps of Engineers
Walla Walla District

- | | | | |
|--------|-----------|--------------|-------------------|
| ● Gate | ? Kiosk | + River Mile | ▭ HMU Boundary |
| ⚓ Dock | P Parking | ♿ Restroom | ▨ Restricted Area |



Lon: -119 Lat: 46.13

SHOTGUN AND ARCHERY ONLY

[BACK TO INDEX](#)

Directions

Travel east on Highway 182 from Richland, Wash., then 0.25 miles south on Queensgate Drive, then travel 2 miles east on Columbia Park Trail. Located on the south shore of the Yakima River.

Site Information

Approximately 800 acres, day-use area, fishing, hiking, bird watching and wildlife viewing.

Rules and Regulations

- Rules and regulations under Title 36 apply on all Corps lands
- All Washington state fishing regulations are applicable
- Be aware that other visitors may be using hunting areas for different recreational activities
- Authorized vehicles only
- Target, clay pigeon shooting and “plinking” are prohibited
- Pick up your litter when you leave ~ Pack It In, Pack It Out
- Camping and open fires are prohibited
- Park in designated parking areas
- Visitors are responsible for recognizing private land boundaries



Live to hunt
another day.

Think
SAFETY!

Contact Information

Natural Resources Management Office
Ice Harbor Lock and Dam
U.S. Army Corps of Engineers
2339 Monument Drive
Burbank, WA 99323

Phone: 509-547-2048

E-mail: corpsoutdoors@usace.army.mil

Website: www.nww.usace.army.mil

Dam-crossing information:

888-DAM-INFO (888-326-4636)

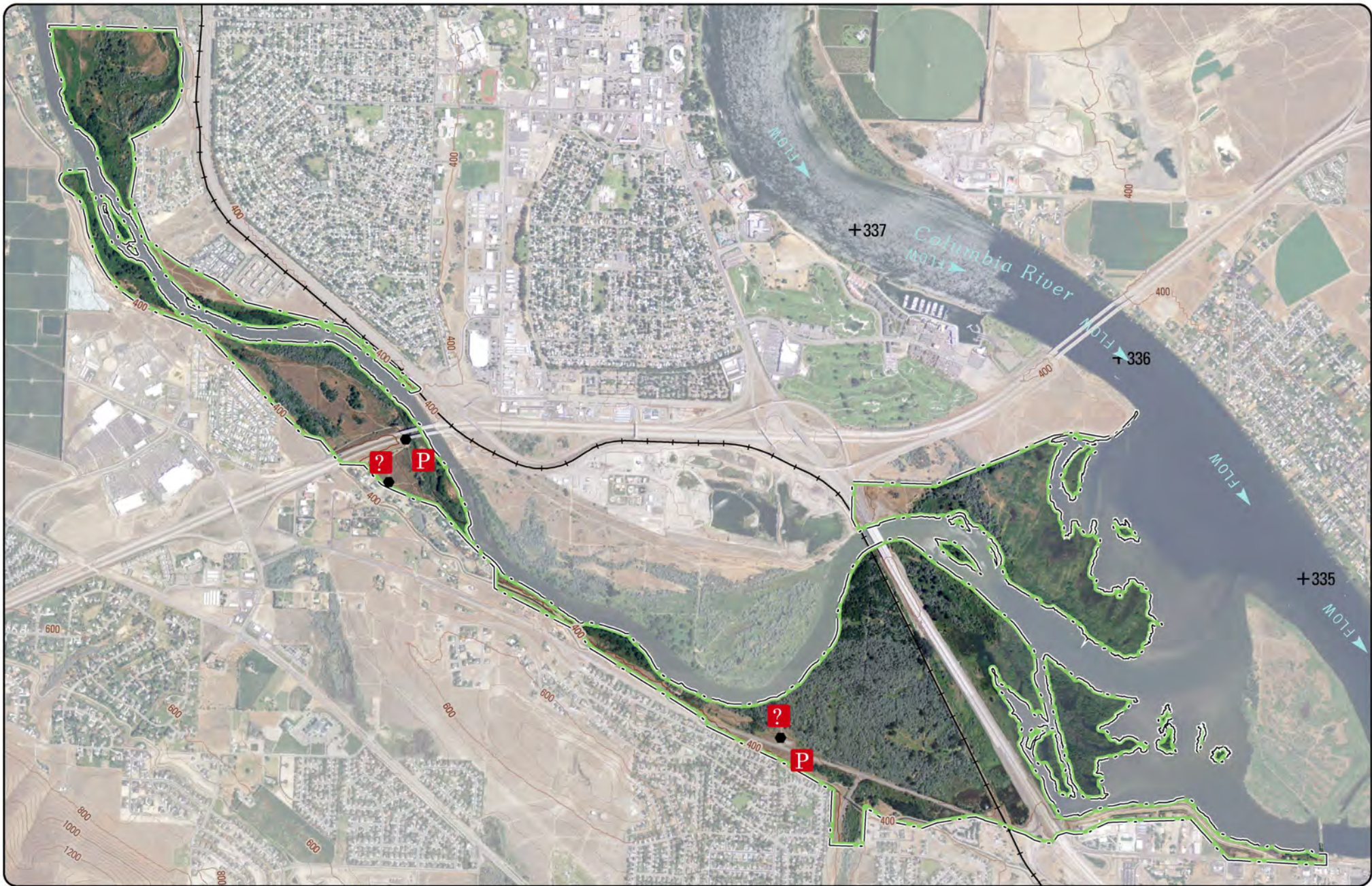


www.facebook.com/wallawallausace



**US Army Corps
of Engineers®**





Yakima Delta Habitat Management Unit

US Army Corps of Engineers
Walla Walla District

- | | | | |
|--|---|--|---|
|  Gate |  Kiosk |  River Mile |  HMU Boundary |
|  Dock |  Parking |  Restroom |  Restricted Area |

0 500 1,000 Feet



Lon: 46.25 Lat: -119.26

NO HUNTING OR CAMPING

[BACK TO INDEX](#)

Directions

Travel 8.3 miles east of Burbank, Wash., on Highway 124, then 2 miles north on Sun Harbor Drive. Located at Snake River Mile 11 on south riverbank of Lake Sacajawea.

Site Information

Approximately 100 acres, day-use area, fishing, hiking, hunting (shotgun and archery only), bird watching and wildlife viewing.

Rules and Regulations

- Rules and regulations under Title 36 apply on all Corps lands
- All Washington state hunting and fishing regulations are applicable
- Be aware that other visitors may be using hunting areas for different recreational activities
- Authorized vehicles only
- Target, clay pigeon shooting and “plinking” are prohibited
- Pick up your litter when you leave ~ Pack It In, Pack It Out
- Open fires are prohibited
- Park in designated parking areas
- Visitors are responsible for recognizing private land boundaries



Live to hunt
another day.

Think
SAFETY!

Contact Information

Natural Resources Management Office
Ice Harbor Lock and Dam
U.S. Army Corps of Engineers
2339 Monument Drive
Burbank, WA 99323

Phone: 509-547-2048

E-mail: corpsoutdoors@usace.army.mil

Website: www.nww.usace.army.mil

Dam-crossing information:
888-DAM-INFO (888-326-4636)

 www.facebook.com/wallawallausace

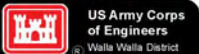


**US Army Corps
of Engineers®**

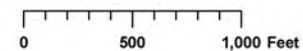




Charbonneau Habitat Management Unit



- | | | | |
|------|---------|------------|-----------------|
| Gate | Kiosk | River Mile | HMU Boundary |
| Dock | Parking | Restroom | Restricted Area |



Lon: -118.84 Lat: 46.27

SHOTGUN AND ARCHERY ONLY

Directions

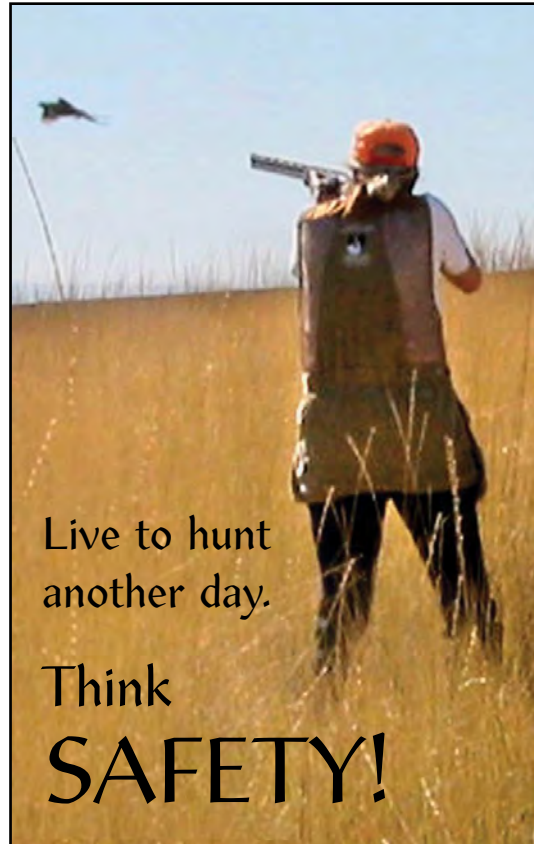
Travel 11.1 miles east of Pasco, Wash., on Pasco Kahlotus Highway, then 0.5 miles south on West Herman Road. Located at Snake River Mile 15 on the north riverbank of Lake Sacajawea.

Site Information

Approximately 920 acres, day-use area, fishing, hiking, hunting (shotgun and archery only), primitive camping sites, vault toilet, bird watching and wildlife viewing, one-lane boat ramp (into Dalton Lake only).

Rules and Regulations

- Rules and regulations under Title 36 apply on all Corps lands
- All Washington state hunting and fishing regulations are applicable
- Be aware that other visitors may be using hunting areas for different recreational activities
- Authorized vehicles only
- Target, clay pigeon shooting and “plinking” are prohibited
- Pick up your litter when you leave ~ Pack It In, Pack It Out
- Open fires are prohibited
- Park in designated parking areas
- Camping is allowed only in parking lot and designated area
- Visitors are responsible for recognizing private land boundaries



Live to hunt
another day.

Think
SAFETY!

Contact Information

Natural Resources Management Office
Ice Harbor Lock and Dam
U.S. Army Corps of Engineers
2339 Monument Drive
Burbank, WA 99323

Phone: 509-547-2048

E-mail: corpsoutdoors@usace.army.mil

Website: www.nww.usace.army.mil

Dam-crossing information:

888-DAM-INFO (888-326-4636)

 www.facebook.com/wallawallausace



**US Army Corps
of Engineers®**

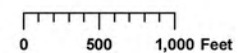




Big Flat Habitat Management Unit

US Army Corps of Engineers
Walla Walla District

- | | | | |
|--------|-----------|--------------|-----------------|
| ● Gate | ? Kiosk | + River Mile | HMU Boundary |
| ⚓ Dock | P Parking | Restroom | Restricted Area |



Lon: -118.79 Lat: 46.3

SHOTGUN AND ARCHERY ONLY

[BACK TO INDEX](#)

Directions

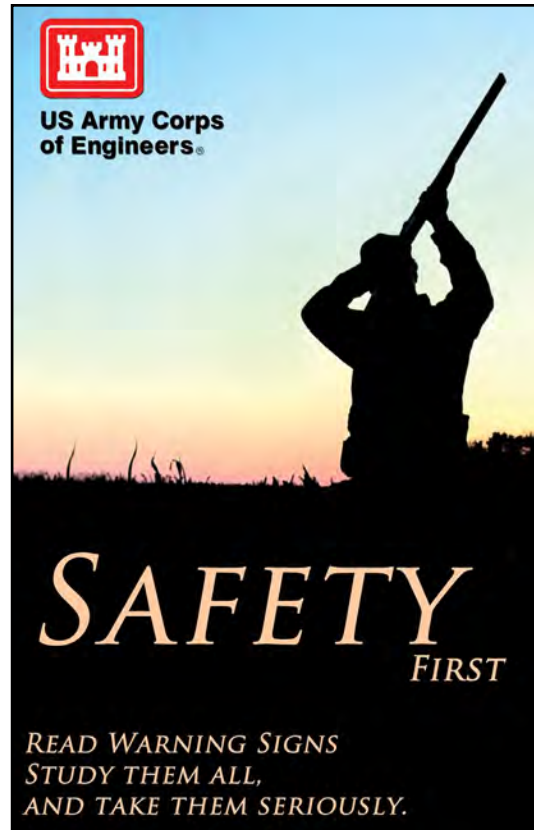
Travel 18 miles east of Burbank, Wash., on Highway 124, then 2 miles north on Fishhook Park Road. Located at Snake River Mile 18 on the south riverbank of Lake Sacajawea.

Site Information

Approximately 217 acres, day-use area, fishing, hiking, hunting (shotgun and archery only), bird watching and wildlife viewing.

Rules and Regulations

- Rules and regulations under Title 36 apply on all Corps lands
- All Washington state hunting and fishing regulations are applicable
- Be aware that other visitors may be using hunting areas for different recreational activities
- Authorized vehicles only
- Target, clay pigeon shooting and “plinking” are prohibited
- Pick up your litter when you leave ~ Pack It In, Pack It Out
- Open fires are prohibited
- Park in designated parking areas
- Visitors are responsible for recognizing private land boundaries



Contact Information

Natural Resources Management Office
Ice Harbor Lock and Dam
U.S. Army Corps of Engineers
2339 Monument Drive
Burbank, WA 99323

Phone: 509-547-2048

E-mail: corpsoutdoors@usace.army.mil

Website: www.nww.usace.army.mil

Dam-crossing information:

888-DAM-INFO (888-326-4636)



www.facebook.com/wallawallausace



US Army Corps
of Engineers®

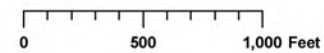




Fishhook Habitat Management Unit

US Army Corps
of Engineers
Walla Walla District

- | | | | |
|--|---|--|---|
|  Gate |  Kiosk |  River Mile |  HMU Boundary |
|  Dock |  Parking |  Restroom |  Restricted Area |



Lon: -118.76 Lat: 46.31

SHOTGUN AND ARCHERY ONLY

[BACK TO INDEX](#)

Directions

Travel 18.5 miles east of Pasco, Wash., on Pasco-Kahlotus Highway, then 3 miles south on McClenny Road, and 2 miles south on Votaw Road. Located at Snake River Mile 19 on the north riverbank of Lake Sacajawea.

Site Information

Approximately 162 acres, day-use area, fishing, hiking, hunting (shotgun and archery only), bird watching and wildlife viewing.

Rules and Regulations

- Rules and regulations under Title 36 apply on all Corps lands
- All Washington state hunting and fishing regulations are applicable
- Be aware that other visitors may be using hunting areas for different recreational activities
- Authorized vehicles only
- Target, clay pigeon shooting and “plinking” are prohibited
- Pick up your litter when you leave ~ Pack It In, Pack It Out
- Camping and open fires are prohibited
- Park in designated parking areas
- Visitors are responsible for recognizing private land boundaries



Contact Information

Natural Resources Management Office
Ice Harbor Lock and Dam
U.S. Army Corps of Engineers
2339 Monument Drive
Burbank, WA 99323

Phone: 509-547-2048

E-mail: corpsoutdoors@usace.army.mil

Website: www.nww.usace.army.mil

Dam-crossing information:

888-DAM-INFO (888-326-4636)

 www.facebook.com/wallawallausace



US Army Corps
of Engineers®

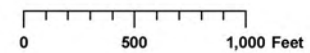




Lost Island Habitat Management Unit

US Army Corps
of Engineers
Walla Walla District

- | | | | |
|--------|-----------|--------------|-----------------|
| ● Gate | ? Kiosk | + River Mile | HMU Boundary |
| ⚓ Dock | P Parking | Restroom | Restricted Area |



Lon: -118.72 Lat: 46.37

SHOTGUN AND ARCHERY ONLY

Directions

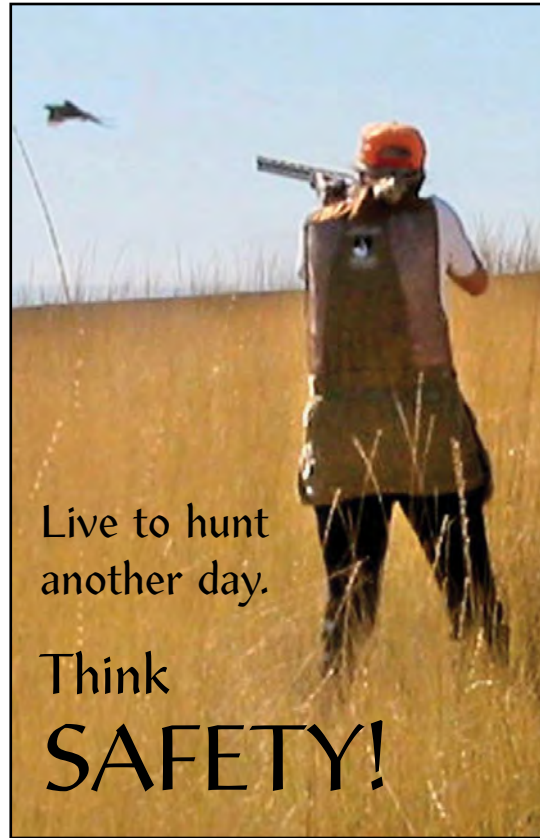
Travel 19 miles east of Burbank, Wash., on Highway 124, then 6 miles north on Rice Road. Located at Snake River Mile 25 on the south riverbank of Lake Sacajawea.

Site Information

Approximately 247 acres, day-use area, fishing, hiking, hunting (shotgun and archery only), bird watching and wildlife viewing.

Rules and Regulations

- Rules and regulations under Title 36 apply on all Corps lands
- All Washington state hunting and fishing regulations are applicable
- Be aware that other visitors may be using hunting areas for different recreational activities
- Authorized vehicles only
- Target, clay pigeon shooting and “plinking” are prohibited
- Pick up your litter when you leave ~ Pack It In, Pack It Out
- Camping and open fires are prohibited
- Park in designated parking areas
- Visitors are responsible for recognizing private land boundaries



Live to hunt
another day.

Think
SAFETY!

Contact Information

Natural Resources Management Office
Ice Harbor Lock and Dam
U.S. Army Corps of Engineers
2339 Monument Drive
Burbank, WA 99323

Phone: 509-547-2048

E-mail: corpsoutdoors@usace.army.mil

Website: www.nww.usace.army.mil

Dam-crossing information:

888-DAM-INFO (888-326-4636)



www.facebook.com/wallawallausace



**US Army Corps
of Engineers®**

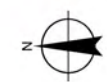
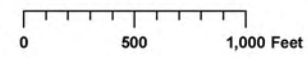




Hollebeke Habitat Management Unit

US Army Corps of Engineers
Walla Walla District

- | | | | |
|------|---------|------------|-----------------|
| Gate | Kiosk | River Mile | HMU Boundary |
| Dock | Parking | Restroom | Restricted Area |



Lon: -118.68 Lat: 46.38

SHOTGUN AND ARCHERY ONLY

[BACK TO INDEX](#)

Directions

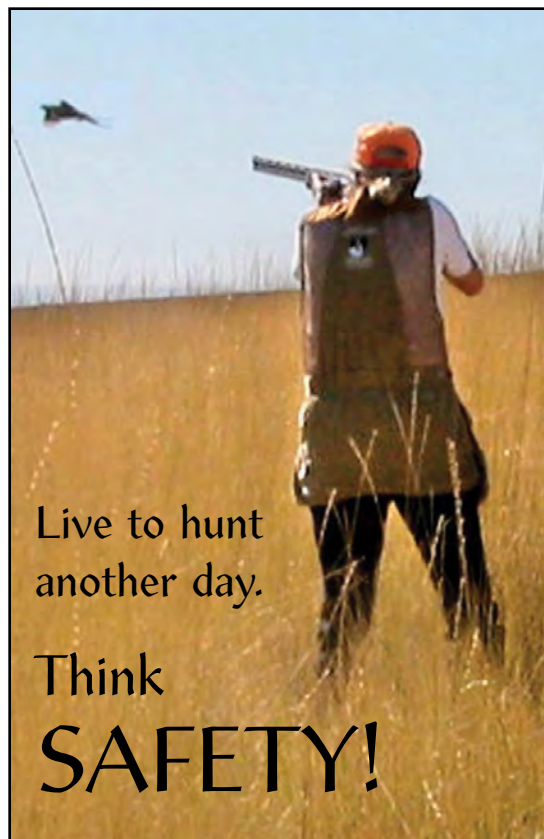
From Highway 12 in Pasco, Wash., travel 24 miles east on Pasco Kahlotus Highway, then 5 miles west on Snake River Road. Located at Snake River Mile 26 on the north riverbank of Lake Sacajawea.

Site Information

Approximately 25 acres, day-use area, fishing, hiking, hunting (shotgun and archery only), bird watching and wildlife viewing.

Rules and Regulations

- Rules and regulations under Title 36 apply on all Corps lands
- All Washington state hunting and fishing regulations are applicable
- Be aware that other visitors may be using hunting areas for different recreational activities
- Authorized vehicles only
- Target, clay pigeon shooting and “plinking” are prohibited
- Pick up your litter when you leave ~ Pack It In, Pack It Out
- Camping and open fires are prohibited
- Park in designated parking areas
- Visitors are responsible for recognizing private land boundaries



Live to hunt
another day.

Think
SAFETY!

Contact Information

Natural Resources Management Office
Ice Harbor Lock and Dam
U.S. Army Corps of Engineers
2339 Monument Drive
Burbank, WA 99323

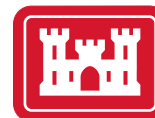
Phone: 509-547-2048

E-mail: corpsoutdoors@usace.army.mil

Website: www.nww.usace.army.mil

Dam-crossing information:
888-DAM-INFO (888-326-4636)

 www.facebook.com/wallawallausace



**US Army Corps
of Engineers®**

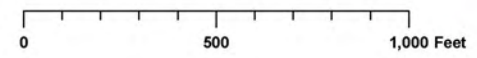




Snake River Junction Habitat Management Unit

US Army Corps
of Engineers
Walla Walla District

- | | | | |
|------|---------|------------|-----------------|
| Gate | Kiosk | River Mile | HMU Boundary |
| Dock | Parking | Restroom | Restricted Area |



Lon: 46.39 Lat: -118.68

SHOTGUN AND ARCHERY ONLY

[BACK TO INDEX](#)

Directions

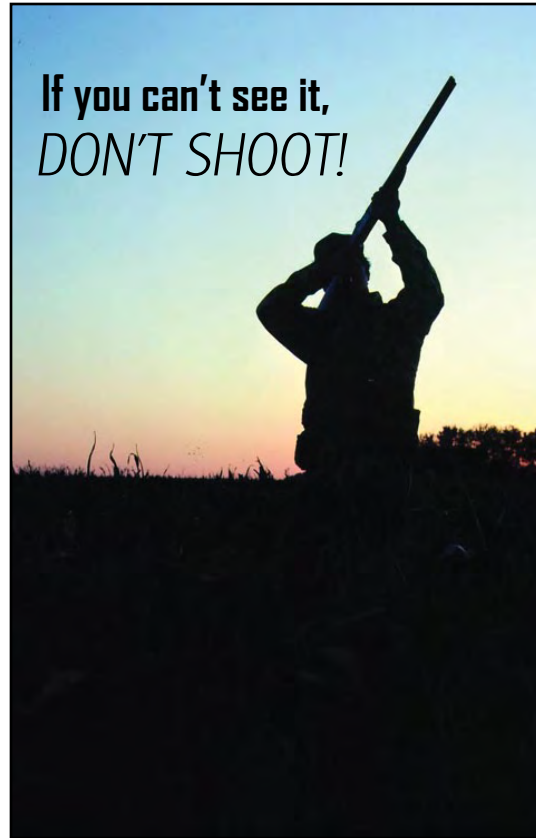
Travel 21 miles east of Burbank, Wash., on Highway 124, then 7.5 miles north onto Eureka North Road (becomes gravel last mile), travel 1 mile west on Simmons Road, then 2 miles north on Wooden Road. Located at Snake River Mile 30 on the south riverbank of Lake Sacajawea. *Note:* Gravel-surfaced roads may be seasonally closed due to hazardous weather conditions.

Site Information

Approximately 90 acres, day-use area, fishing, hiking, hunting (shotgun and archery only), bird watching and wildlife viewing.

Rules and Regulations

- Rules and regulations under Title 36 apply on all Corps lands
- All Washington state hunting and fishing regulations are applicable
- Be aware that other visitors may be using hunting areas for different recreational activities
- Authorized vehicles only
- Target, clay pigeon shooting and “plinking” are prohibited
- Pick up your litter when you leave ~ Pack It In, Pack It Out
- Open fires are prohibited
- Park in designated parking areas
- Visitors are responsible for recognizing private land boundaries



Contact Information

Natural Resources Management Office
Ice Harbor Lock and Dam
U.S. Army Corps of Engineers
2339 Monument Drive
Burbank, WA 99323

Phone: 509-547-2048

E-mail: corpsoutdoors@usace.army.mil

Website: www.nww.usace.army.mil

Dam-crossing information:

888-DAM-INFO (888-326-4636)

 www.facebook.com/wallawallausace



**US Army Corps
of Engineers®**



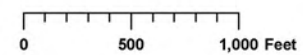


Walker Habitat Management Unit

- | | | | |
|--|---|--|---|
|  Gate |  Kiosk |  River Mile |  HMU Boundary |
|  Dock |  Parking |  Restroom |  Restricted Area |

Lon: -118.63 Lat: 46.43

SHOTGUN AND ARCHERY ONLY



Directions (boat-access only)

Located at Snake River Mile 48 on the north riverbank of Lake West.
From Lower Monumental Dam (Franklin County): Boat upriver 6 miles.
From Lyons Ferry Marina (Columbia County): Boat downriver 9 miles.

Site Information

Approximately 764 acres, day-use area, fishing, hiking, hunting, bird watching and wildlife viewing.

Rules and Regulations

- Rules and regulations under Title 36 apply on all Corps lands
- All Washington state hunting and fishing regulations are applicable
- Be aware that other visitors may be using hunting areas for different recreational activities
- Authorized vehicles only
- Target, clay pigeon shooting and “plinking” are prohibited
- Pick up your litter when you leave ~ Pack It In, Pack It Out
- Open fires are prohibited
- Camping is prohibited
- Visitors are responsible for recognizing private land boundaries



Contact Information

Natural Resources Management Office
Ice Harbor Lock and Dam
U.S. Army Corps of Engineers
2339 Monument Drive
Burbank, WA 99323

Phone: 509-547-2048

E-mail: corpsoutdoors@usace.army.mil

Website: www.nwww.usace.army.mil

Dam-crossing information:

888-DAM-INFO (888-326-4636)

 www.facebook.com/wallawallausace



**US Army Corps
of Engineers®**

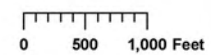




Skookum Habitat Management Unit

US Army Corps
of Engineers
Walla Walla District

- | | | | |
|--------|-----------|--------------|-------------------|
| ● Gate | ? Kiosk | + River Mile | ▭ HMU Boundary |
| ⚓ Dock | P Parking | ♿ Restroom | ▨ Restricted Area |



Lon: -118.41 Lat: 46.59

BOAT ACCESS ONLY

[BACK TO INDEX](#)

Directions (boat access only)

Located at Snake River Mile 55 on the north riverbank of Lake West.

From Lower Monumental Dam (Franklin County): Boat upriver 13.5 miles.

From Lyons Ferry Marina (Columbia County): Boat down river 4 miles.

Site Information

Approximately 295 acres, day-use area, fishing, hiking, hunting, bird watching and wildlife viewing.

Rules and Regulations

- Rules and regulations under Title 36 apply on all Corps lands
- All Washington state hunting and fishing regulations are applicable
- Be aware that other visitors may be using hunting areas for different recreational activities
- Authorized vehicles only
- Target, clay pigeon shooting and “plinking” are prohibited
- Pick up your litter when you leave ~ Pack It In, Pack It Out
- Open fires are prohibited
- Camping is prohibited
- Visitors are responsible for recognizing private land boundaries



Contact Information

Natural Resources Management Office
Ice Harbor Lock and Dam
U.S. Army Corps of Engineers
2339 Monument Drive
Burbank, WA 99323

Phone: 509-547-2048

E-mail: corpsoutdoors@usace.army.mil

Website: www.nwww.usace.army.mil

Dam-crossing information:

888-DAM-INFO (888-326-4636)



www.facebook.com/wallawallausace



**US Army Corps
of Engineers®**

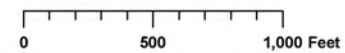




55 Mile Habitat Management Unit

US Army Corps
of Engineers
Walla Walla District

- | | | | |
|--------|-----------|--------------|-----------------|
| ● Gate | ? Kiosk | + River Mile | HMU Boundary |
| ⚓ Dock | P Parking | ♿ Restroom | Restricted Area |



Lon: -118.29 Lat: 46.6

BOAT ACCESS ONLY

[BACK TO INDEX](#)

Directions

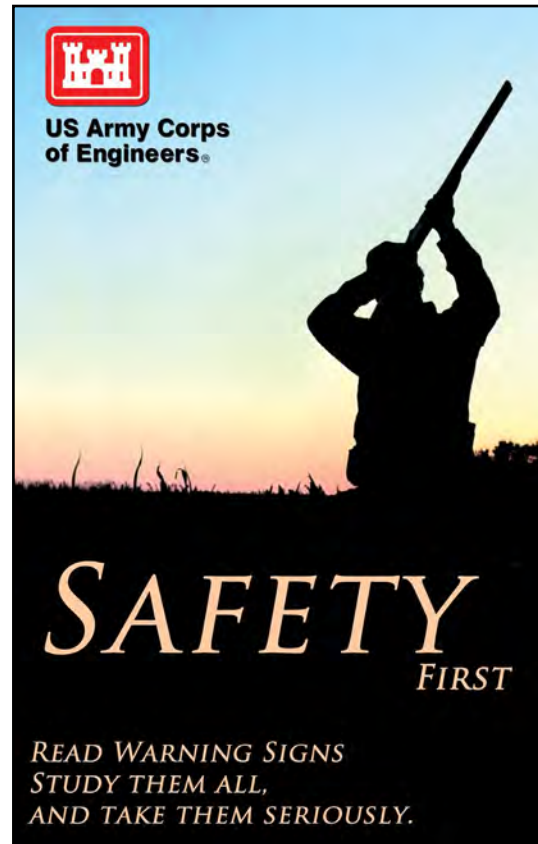
From the north shore of the Snake River on state Highway 261, enter Lyons Ferry Park on the east side of the highway. Follow the entrance road north 0.25 miles to the parking area on the right side of the road near the gate. Located at Snake River Mile 59.5 on the north riverbank of Lake West.

Site Information

Approximately 1,935 acres, day-use area, fishing, hiking, hunting, bird watching and wildlife viewing. Toilets, camping and boat ramp are available across the river at Lyons Ferry Marina. Boat launch fee required.

Rules and Regulations

- Rules and regulations under Title 36 apply on all Corps lands
- All Washington state hunting and fishing regulations are applicable
- Shotgun and archery hunting only in areas adjacent to Lyons Ferry Marina (see map)
- Authorized vehicles only; no ATVs
- Target, clay pigeon shooting and “plinking” are prohibited
- Pick up your litter when you leave ~ Pack It In, Pack It Out
- Be aware that other visitors may be using hunting areas for different recreational activities
- Open fires are prohibited
- Park in designated parking areas
- Camping is not allowed in habitat management areas
- Visitors are responsible for recognizing private land boundaries



Contact Information

Natural Resources Management Office
Lower Granite Lock and Dam
U.S. Army Corps of Engineers
100 Fair Street
Clarkston, WA 99403

Phone: 509-751-0240

E-mail: corpsoutdoors@usace.army.mil

Website: www.nww.usace.army.mil

Dam-crossing information:
888-DAM-INFO (888-326-4636)

 www.facebook.com/wallawallausace



US Army Corps
of Engineers®





Lyons Ferry Habitat Management Unit

- | | | | |
|--------|-----------|--------------|-------------------|
| ● Gate | ? Kiosk | + River Mile | ▬ HMU Boundary |
| ⚓ Dock | P Parking | 🚻 Restroom | ▨ Restricted Area |

0 500 1,000 Feet



Lon: -118.22 Lat: 46.62

SHOTGUN AND ARCHERY ONLY NEXT TO MARINA

[BACK TO INDEX](#)

Directions

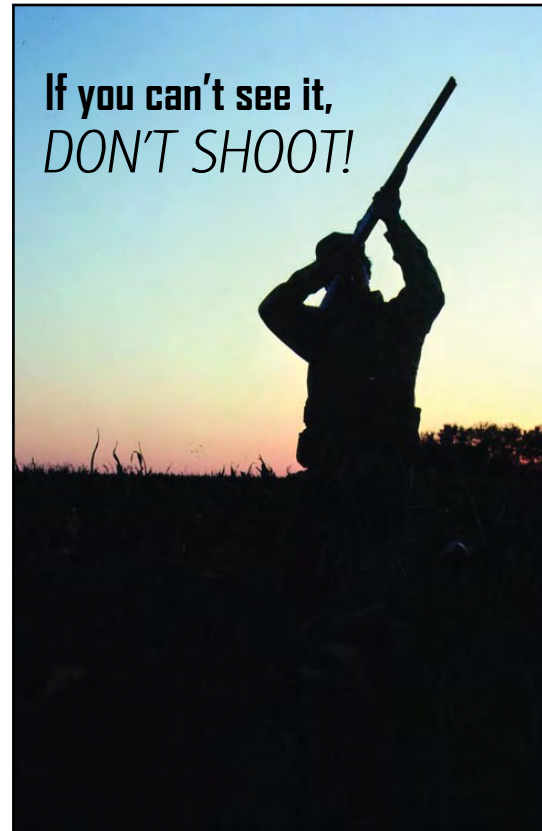
From U.S. Highway 12, take state Highway 261 west for 11.1 miles. The parking area is on the north side of the road next to the Tucannon River at milepost 11. Located at Snake River Mile 62.5 on the south riverbank of Lake West.

Site Information

Approximately 390 acres, day-use area, fishing, hiking, hunting, bird watching and wildlife viewing, vault toilet, camping.

Rules and Regulations

- Rules and regulations under Title 36 apply on all Corps lands
- All Washington state hunting and fishing regulations are applicable
- Authorized vehicles only; no ATVs
- Target, clay pigeon shooting and “plinking” are prohibited
- Pick up your litter when you leave ~ Pack It In, Pack It Out
- Be aware that other visitors may be using hunting areas for different recreational activities
- Open fires are prohibited
- Park in designated parking areas
- Camping is not allowed in parking areas or habitat management area
- Visitors are responsible for recognizing private land boundaries



Contact Information

Natural Resources Management Office
Lower Granite Lock and Dam
U.S. Army Corps of Engineers
100 Fair Street
Clarkston, WA 99403

Phone: 509-751-0240

E-mail: corpsoutdoors@usace.army.mil

Website: www.nww.usace.army.mil

Dam-crossing information:

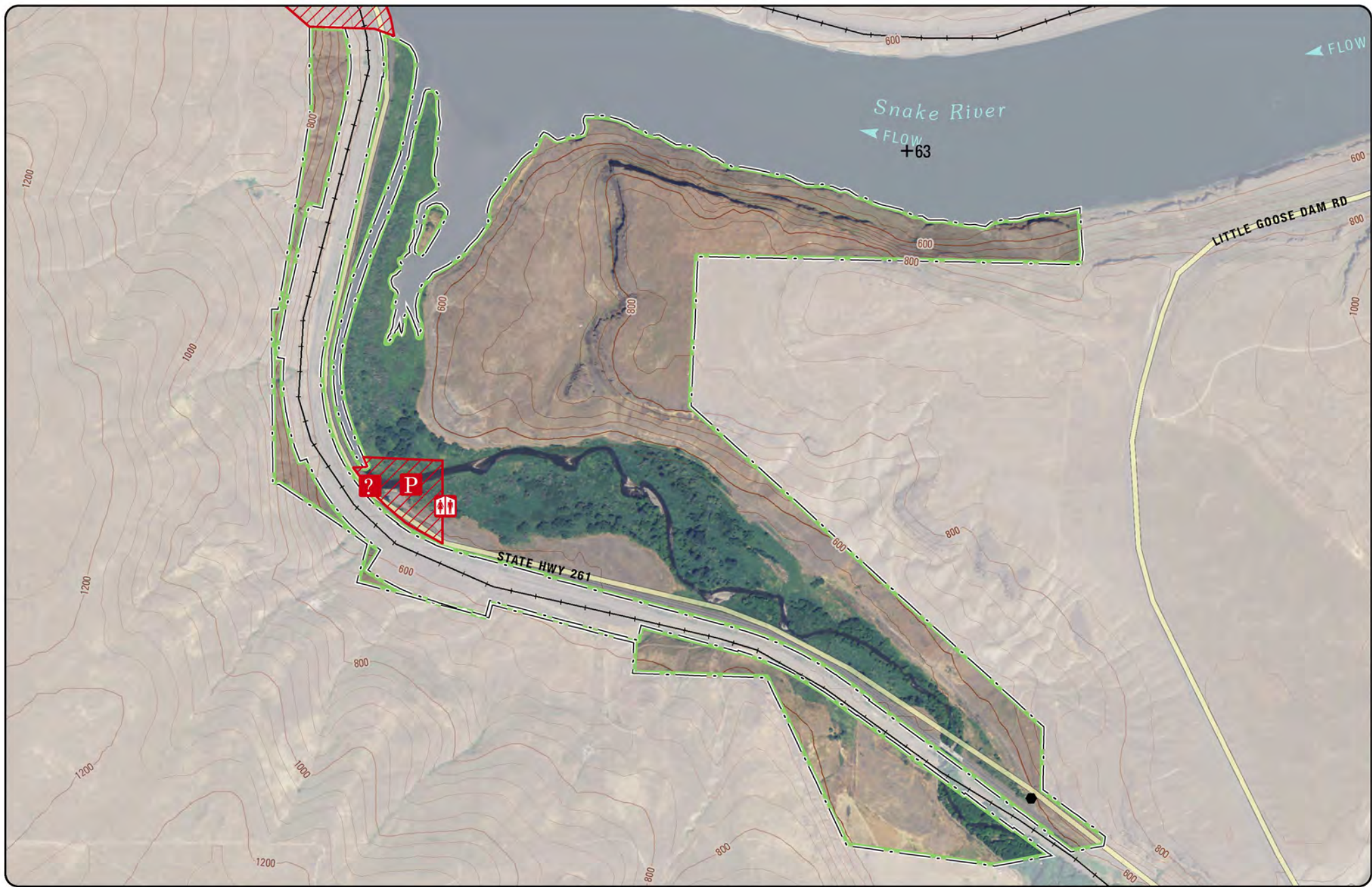
888-DAM-INFO (888-326-4636)

 www.facebook.com/wallawallausace



**US Army Corps
of Engineers®**

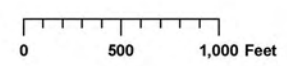




Tucannon Habitat Management Unit



- | | | | |
|------|---------|------------|-----------------|
| Gate | Kiosk | River Mile | HMU Boundary |
| Dock | Parking | Restroom | Restricted Area |



Lon: -118.17 Lat: 46.55

Directions

From state Highway 127, travel west on Big Alkali Road for 10.5 miles. At the town of Hay, turn south onto Long Hollow Road for 14.3 miles. Upon reaching the Snake River, travel east on Little Goose Dam Road for 1.5 miles. There are two parking areas on the south side of the road. Located at Snake River Mile 68 on the north riverbank of Lake West.

Site Information

Approximately 870 acres, day-use area, fishing, hiking, hunting, bird watching and wildlife viewing. Vault toilet and primitive camping are available nearby at Riparia.

Rules and Regulations

- Rules and regulations under Title 36 apply on all Corps lands
- All Washington state hunting and fishing regulations are applicable
- Shotgun and archery only on south side of county road, rifle hunting permitted on north side of county road
- Authorized vehicles only; no ATVs
- Target, clay pigeon shooting and “plinking” are prohibited
- Pick up your litter when you leave ~ Pack It In, Pack It Out
- Be aware that other visitors may be using hunting areas for different recreational activities
- Open fires are prohibited
- Park in designated parking areas
- Camping is not allowed in parking areas or habitat management area
- Visitors are responsible for recognizing private land boundaries



Contact Information

Natural Resources Management Office
Lower Granite Lock and Dam
U.S. Army Corps of Engineers
100 Fair Street
Clarkston, WA 99403

Phone: 509-751-0240

E-mail: corpsoutdoors@usace.army.mil

Website: www.nww.usace.army.mil

Dam-crossing information:

888-DAM-INFO (888-326-4636)



www.facebook.com/wallawallausace



US Army Corps
of Engineers®

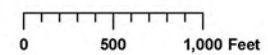




John Henley Habitat Management Unit



- | | | | |
|--------|-----------|--------------|-----------------|
| ● Gate | ? Kiosk | + River Mile | HMU Boundary |
| ⚓ Dock | P Parking | Restroom | Restricted Area |



Lon: -118.07 Lat: 46.58

SHOTGUN AND ARCHERY ONLY SOUTH OF LITTLE GOOSE DAM RD

[BACK TO INDEX](#)

Directions (boat-access only)

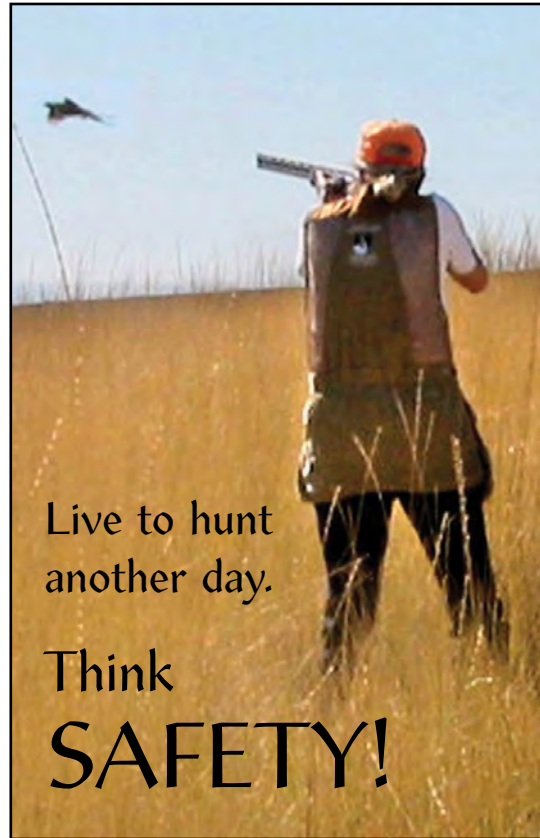
Located at Snake River Mile 76 on the north riverbank of Lake Bryan. From the Port of Garfield Boat Ramp (Garfield County): Boat downriver 6.2 miles.

Site Information

Approximately 133 acres, fishing, hunting, bird watching and wildlife viewing. The Port of Garfield Boat Ramp has a vault toilet.

Rules and Regulations

- Rules and regulations under Title 36 apply on all Corps lands
- All Washington state hunting and fishing regulations are applicable
- Authorized vehicles only; no ATVs
- Target, clay pigeon shooting and “plinking” are prohibited
- Pick up your litter when you leave ~ Pack It In, Pack It Out
- Be aware that other visitors may be using hunting areas for different recreational activities
- Open fires are prohibited
- Camping is not allowed in habitat management area
- Visitors are responsible for recognizing private land boundaries



Contact Information

Natural Resources Management Office
Lower Granite Lock and Dam
U.S. Army Corps of Engineers
100 Fair Street
Clarkston, WA 99403

Phone: 509-751-0240

E-mail: corpsoutdoors@usace.army.mil

Website: www.nww.usace.army.mil

Dam-crossing information:

888-DAM-INFO (888-326-4636)



www.facebook.com/wallawallausace



**US Army Corps
of Engineers®**

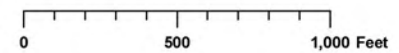




Ridpath Habitat Management Unit

US Army Corps of Engineers
Walla Walla District

- | | | | |
|--|---|--|---|
|  Gate |  Kiosk |  River Mile |  HMU Boundary |
|  Dock |  Parking |  Restroom |  Restricted Area |



Lon: -117.9 Lat: 46.59

BOAT ACCESS ONLY

[BACK TO INDEX](#)

Directions (boat-access only)

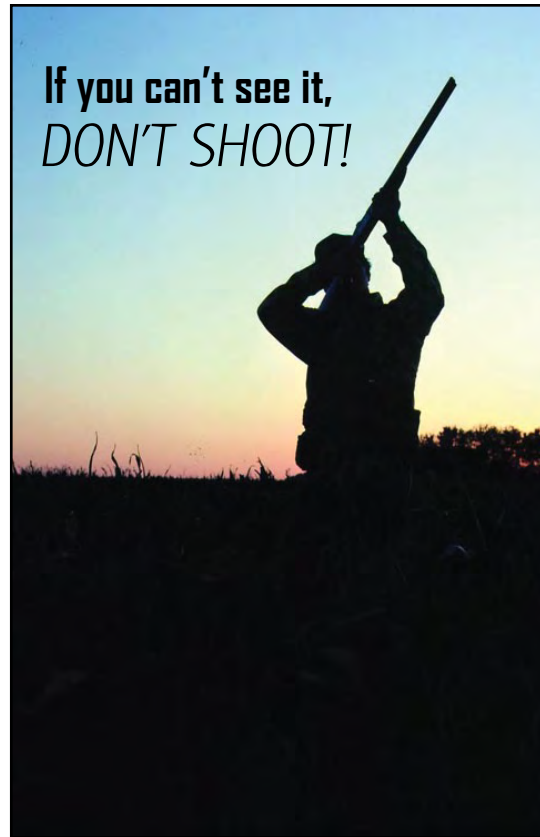
Located at Snake River Mile 81 on the south riverbank of Lake Bryan. From the Port of Garfield Boat Ramp (Garfield County): Boat downriver 2.3 miles.

Site Information

Approximately 154 acres, fishing, hunting, bird watching and wildlife viewing. The Port of Garfield Boat Ramp has a vault toilet.

Rules and Regulations

- Rules and regulations under Title 36 apply on all Corps lands
- All Washington state hunting and fishing regulations are applicable
- Authorized vehicles only; no ATVs
- Target, clay pigeon shooting and “plinking” are prohibited
- Pick up your litter when you leave ~ Pack It In, Pack It Out
- Be aware that other visitors may be using hunting areas for different recreational activities
- Open fires are prohibited
- Camping is not allowed in habitat management area
- Visitors are responsible for recognizing private land boundaries



Contact Information

Natural Resources Management Office
Lower Granite Lock and Dam
U.S. Army Corps of Engineers
100 Fair Street
Clarkston, WA 99403

Phone: 509-751-0240

E-mail: corpsoutdoors@usace.army.mil

Website: www.nww.usace.army.mil

Dam-crossing information:

888-DAM-INFO (888-326-4636)

 www.facebook.com/wallawallausace



US Army Corps
of Engineers®



Snake River

← FLOW

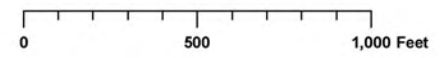
+81
← FLOW



New York Bar Habitat Management Unit

US Army Corps of Engineers
Walla Walla District

- Gate
- Ⓜ Dock
- ❓ Kiosk
- Ⓟ Parking
- + River Mile
- ♿ Restroom
- ▭ HMU Boundary
- ▨ Restricted Area



Lon: -117.85 Lat: 46.62

BOAT ACCESS ONLY

[BACK TO INDEX](#)

Directions

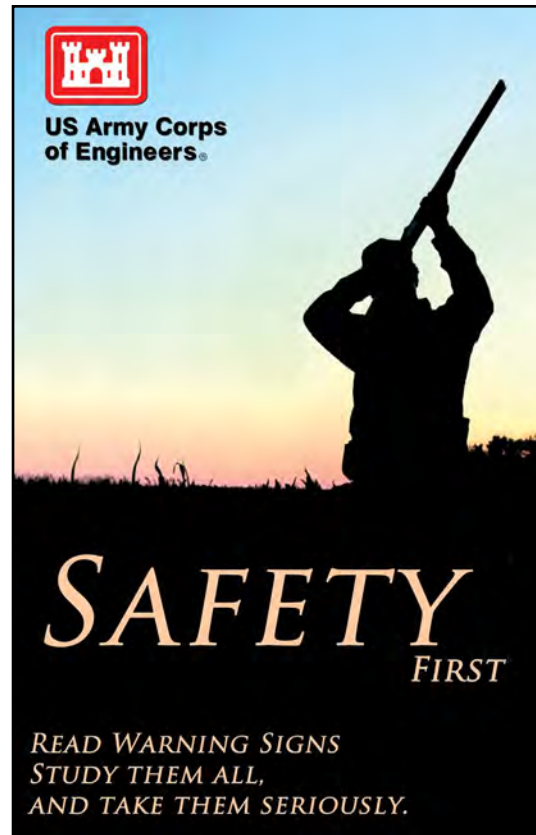
From state Highway 127, travel east on Lower Deadman Road for 1.2 miles. A small pullout is available for parking directly across the road from the gate. Located at Snake River Mile 83 on the south shoreline of Lake Bryan.

Site Information

Approximately 347 acres, fishing, hunting, bird watching and wildlife viewing. Vault toilet, and boat ramp are available at the nearby Port of Garfield Boat Ramp (behind the grain elevators at milepost 9 on Highway 127).

Rules and Regulations

- Rules and regulations under Title 36 apply on all Corps lands
- All Washington state hunting and fishing regulations are applicable
- Authorized vehicles only; no ATVs
- Target, clay pigeon shooting and “plinking” are prohibited
- Pick up your litter when you leave ~ Pack It In, Pack It Out
- Be aware that other visitors may be using hunting areas for different recreational activities
- Open fires are prohibited
- Camping is not allowed in habitat management area
- Visitors are responsible for recognizing private land boundaries



Contact Information

Natural Resources Management Office
Lower Granite Lock and Dam
U.S. Army Corps of Engineers
100 Fair Street
Clarkston, WA 99403

Phone: 509-751-0240

E-mail: corpsoutdoors@usace.army.mil

Website: www.nww.usace.army.mil

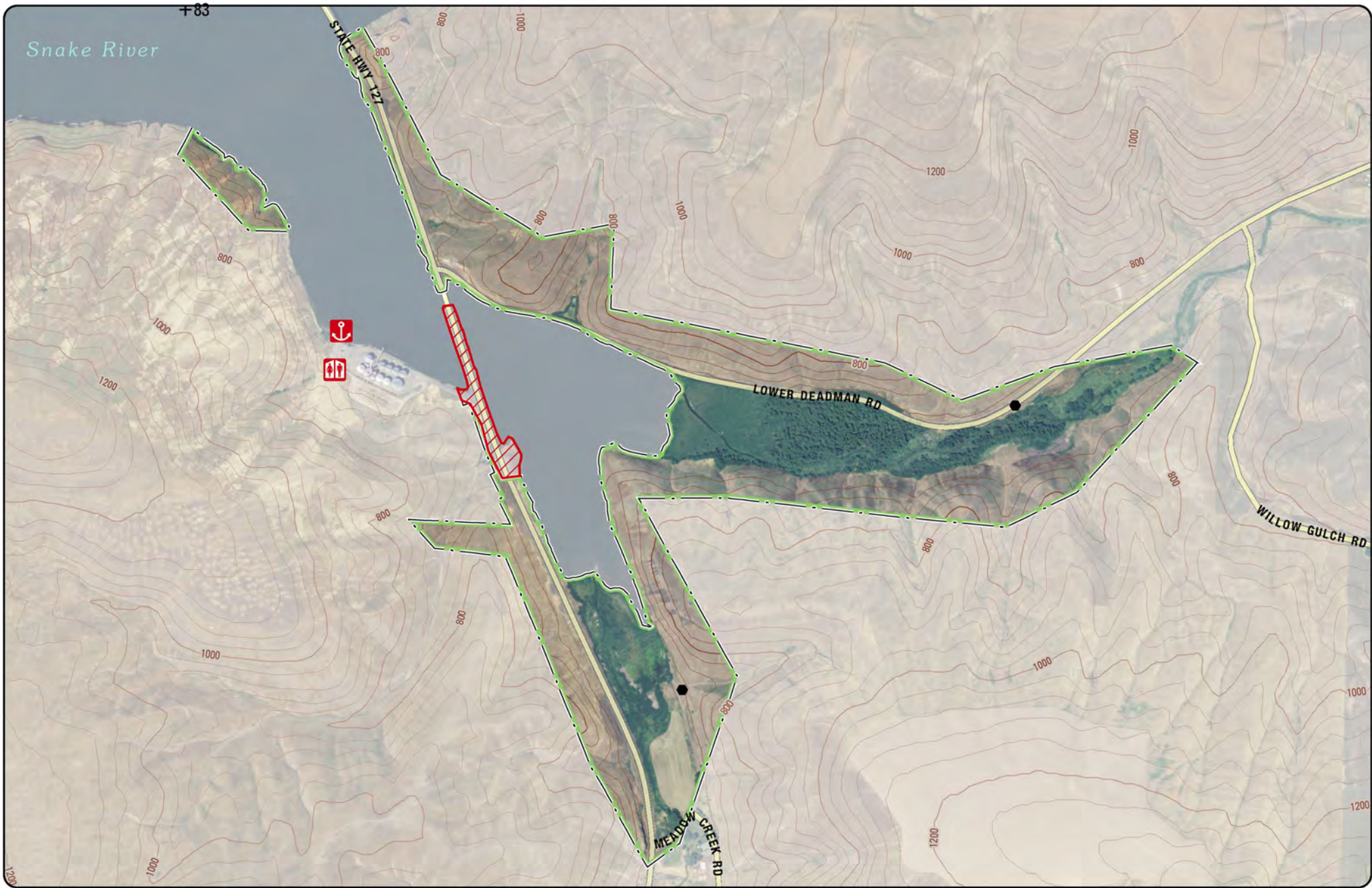
Dam-crossing information:
888-DAM-INFO (888-326-4636)

 www.facebook.com/wallawallausace



US Army Corps
of Engineers®

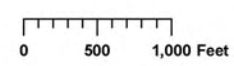




Lower Deadman Habitat Management Unit

US Army Corps of Engineers
Walla Walla District

- | | | | |
|--------|-----------|--------------|-------------------|
| ● Gate | ? Kiosk | + River Mile | ▭ HMU Boundary |
| ⚓ Dock | P Parking | ♿ Restroom | ▨ Restricted Area |



Lon: -117.78 Lat: 46.61

Directions

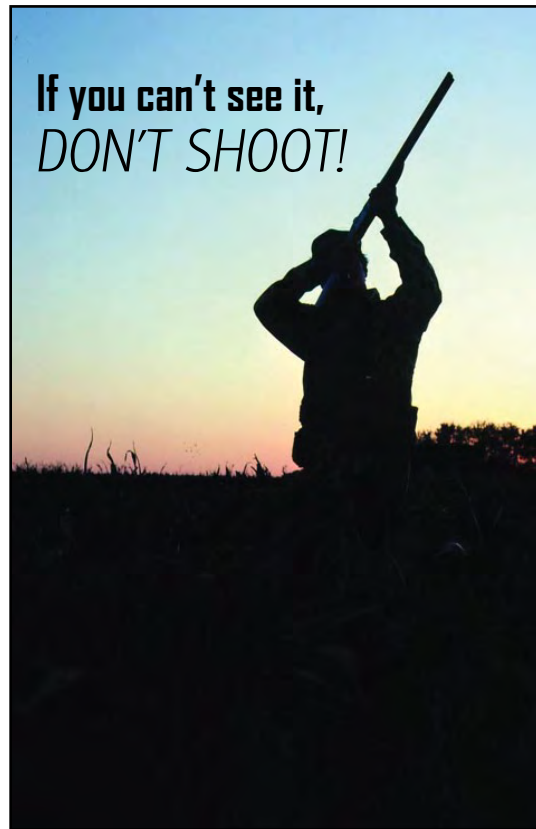
From the north side of the Snake River on state Highway 127, travel north for 0.5 miles. Shortly after crossing over the railroad tracks, turn east onto Central Ferry Road for 0.25 miles. Located at Snake River Mile 83.5 on the north riverbank of Lake Bryan.

Site Information

Approximately 564 acres, day-use area, fishing, hiking, hunting, bird watching and wildlife viewing. Toilets, camping and boat ramp are available at the Port of Garfield on the south side of the river.

Rules and Regulations

- Rules and regulations under Title 36 apply on all Corps lands
- All Washington state hunting and fishing regulations are applicable
- Shotgun and archery hunting only
- Authorized vehicles only; no ATVs
- Target, clay pigeon shooting and “plinking” are prohibited
- Pick up your litter when you leave ~ Pack It In, Pack It Out
- Be aware that other visitors may be using hunting areas for different recreational activities
- Open fires are prohibited
- Park in designated parking areas
- Camping is not allowed in habitat management area
- Visitors are responsible for recognizing private land boundaries
- Visitors are responsible for recognizing private land boundaries



Contact Information

Natural Resources Management Office
Lower Granite Lock and Dam
U.S. Army Corps of Engineers
100 Fair Street
Clarkston, WA 99403

Phone: 509-751-0240

E-mail: corpsoutdoors@usace.army.mil

Website: www.nww.usace.army.mil

Dam-crossing information:

888-DAM-INFO (888-326-4636)

 www.facebook.com/wallawallausace



US Army Corps
of Engineers®

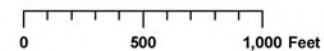




Central Ferry Habitat Management Unit

US Army Corps of Engineers
Walla Walla District

- | | | | |
|------|---------|------------|-----------------|
| Gate | Kiosk | River Mile | HMU Boundary |
| Dock | Parking | Restroom | Restricted Area |



Lon: -117.8 Lat: 46.64

SHOTGUN AND ARCHERY ONLY

[BACK TO INDEX](#)

Directions

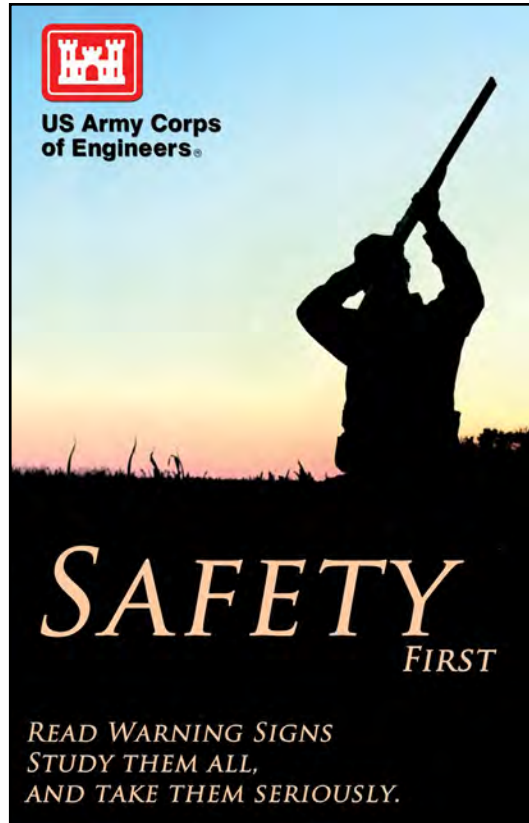
From state Highway 127, travel east on Lower Deadman Road for 2.2 miles. Turn north onto Hastings Hill Road for 4.7 miles. Located at Snake River Mile 88 on the south riverbank of Lake Bryan.

Site Information

Approximately 309 acres, day-use area, fishing, hiking, hunting, bird watching and wildlife viewing. Vault toilet, camping and boat ramp are available nearby at Willow Landing.

Rules and Regulations

- Rules and regulations under Title 36 apply on all Corps lands
- All Washington state hunting and fishing regulations are applicable
- Authorized vehicles only; no ATVs
- Target, clay pigeon shooting and “plinking” are prohibited
- Pick up your litter when you leave ~ Pack It In, Pack It Out
- Be aware that other visitors may be using hunting areas for different recreational activities
- Open fires are prohibited
- Park in designated parking areas
- Camping is not allowed in habitat management area
- Visitors are responsible for recognizing private land boundaries



Contact Information

Natural Resources Management Office
Lower Granite Lock and Dam
U.S. Army Corps of Engineers
100 Fair Street
Clarkston, WA 99403

Phone: 509-751-0240

E-mail: corpsoutdoors@usace.army.mil

Website: www.nww.usace.army.mil

Dam-crossing information:

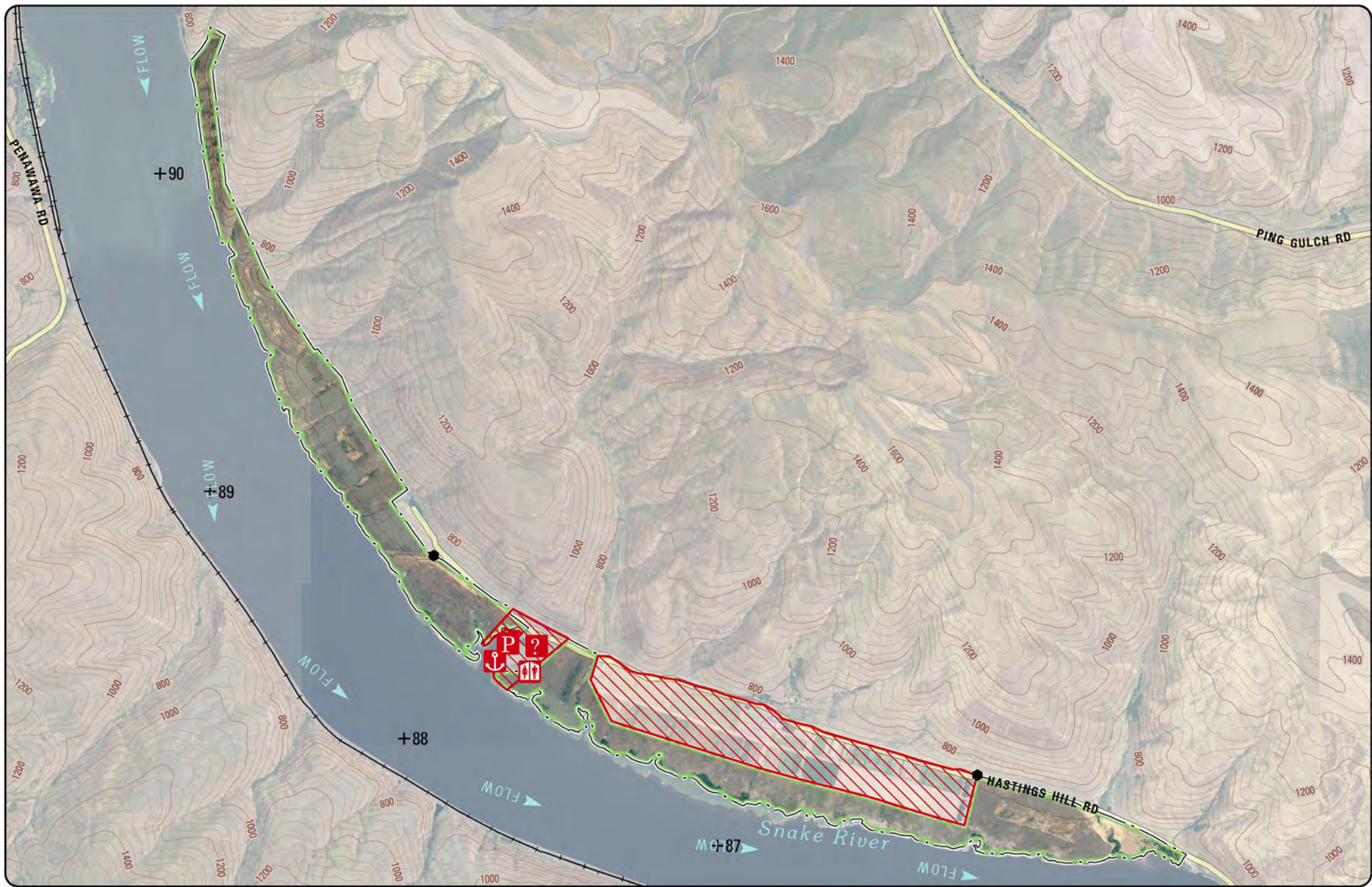
888-DAM-INFO (888-326-4636)

 www.facebook.com/wallawallausace

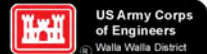


US Army Corps
of Engineers®

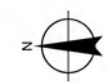
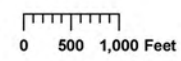




Willow Bar Habitat Management Unit



- | | | | |
|------|---------|------------|-----------------|
| Gate | Kiosk | River Mile | HMU Boundary |
| Dock | Parking | Restroom | Restricted Area |



Lon: -117.75 Lat: 46.68

[BACK TO INDEX](#)

Directions

From state Highway 127, travel south on Horton Grade Road for 5.3 miles (becomes Penawawa Road at the river). Located at Snake River Mile 91.5 on the north riverbank of Lake Bryan.

Site Information

Approximately 233 acres, day-use area, fishing, hiking, hunting, bird watching and wildlife viewing, primitive camping.

Rules and Regulations

- Rules and regulations under Title 36 apply on all Corps lands
- All Washington state hunting and fishing regulations are applicable
- Authorized vehicles only; no ATVs
- Target, clay pigeon shooting and “plinking” are prohibited
- Pick up your litter when you leave ~ Pack It In, Pack It Out
- Be aware that other visitors may be using hunting areas for different recreational activities
- Open fires are prohibited
- Park in designated parking areas
- Camping allowed in parking area only
- Visitors are responsible for recognizing private land boundaries



Live to hunt
another day.

Think
SAFETY!

Contact Information

Natural Resources Management Office
Lower Granite Lock and Dam
U.S. Army Corps of Engineers
100 Fair Street
Clarkston, WA 99403

Phone: 509-751-0240

E-mail: corpsoutdoors@usace.army.mil

Website: www.nww.usace.army.mil

Dam-crossing information:

888-DAM-INFO (888-326-4636)



www.facebook.com/wallawallausace



**US Army Corps
of Engineers®**



Directions

From state Highway 127, take Lower Deadman Road east for 3.6 miles, turn north onto Ping Gulch Road for 4.9 miles, turn north onto Rice Bar Hill Road for 3.9 miles. Located at Snake River Mile 93 on the south riverbank of Lake Bryan.

Site Information

Approximately 479 acres, day-use area, fishing, hiking, hunting, bird watching and wildlife viewing, vault toilet, primitive camping.

Rules and Regulations

- Rules and regulations under Title 36 apply on all Corps lands
- All Washington state hunting and fishing regulations are applicable
- Authorized vehicles only; no ATVs
- Target, clay pigeon shooting and “plinking” are prohibited
- Pick up your litter when you leave ~ Pack It In, Pack It Out
- Be aware that other visitors may be using hunting areas for different recreational activities
- Park in designated parking areas
- Camping allowed in parking area only
- Visitors are responsible for recognizing private land boundaries



Live to hunt
another day.

Think
SAFETY!

Contact Information

Natural Resources Management Office
Lower Granite Lock and Dam
U.S. Army Corps of Engineers
100 Fair Street
Clarkston, WA 99403

Phone: 509-751-0240

E-mail: corpsoutdoors@usace.army.mil

Website: www.nwww.usace.army.mil

Dam-crossing information:

888-DAM-INFO (888-326-4636)



www.facebook.com/wallawallausace



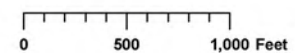
**US Army Corps
of Engineers®**





Rice Bar Habitat Management Unit

- | | | | |
|--|---|--|---|
|  Gate |  Kiosk |  River Mile |  HMU Boundary |
|  Dock |  Parking |  Restroom |  Restricted Area |



Lon: -117.66 Lat: 46.7



Directions (boat-access only)

Located at Snake River Mile 97 on the north riverbank of Lake Bryan.
From Boyer Park Marina (Whitman County): Boat downriver 7.8 miles.

Site Information

Approximately 441 acres, fishing, hunting, bird watching and wildlife viewing. Boyer Park Marina has toilets, boat ramp, fuel, food, camping, day use area and a motel. Boat launch fee required.

Rules and Regulations

- Rules and regulations under Title 36 apply on all Corps lands
- All Washington state hunting and fishing regulations are applicable
- Be aware that other visitors may be using hunting areas for different recreational activities
- Authorized vehicles only; no off-road, motorized vehicles
- Target, clay pigeon shooting and “plinking” are prohibited
- Pick up your litter when you leave ~ Pack It In, Pack It Out
- Camping is not allowed in parking areas or habitat management area
- Visitors are responsible for recognizing private land boundaries



Contact Information

Natural Resources Management Office
Lower Granite Lock and Dam
U.S. Army Corps of Engineers
100 Fair Street
Clarkston, WA 99403

Phone: 509-751-0240

E-mail: corpsoutdoors@usace.army.mil

Website: www.nww.usace.army.mil

Dam-crossing information:

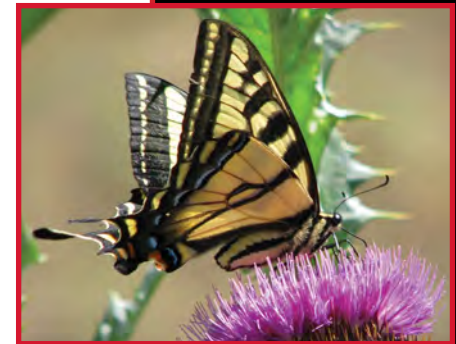
888-DAM-INFO (888-326-4636)

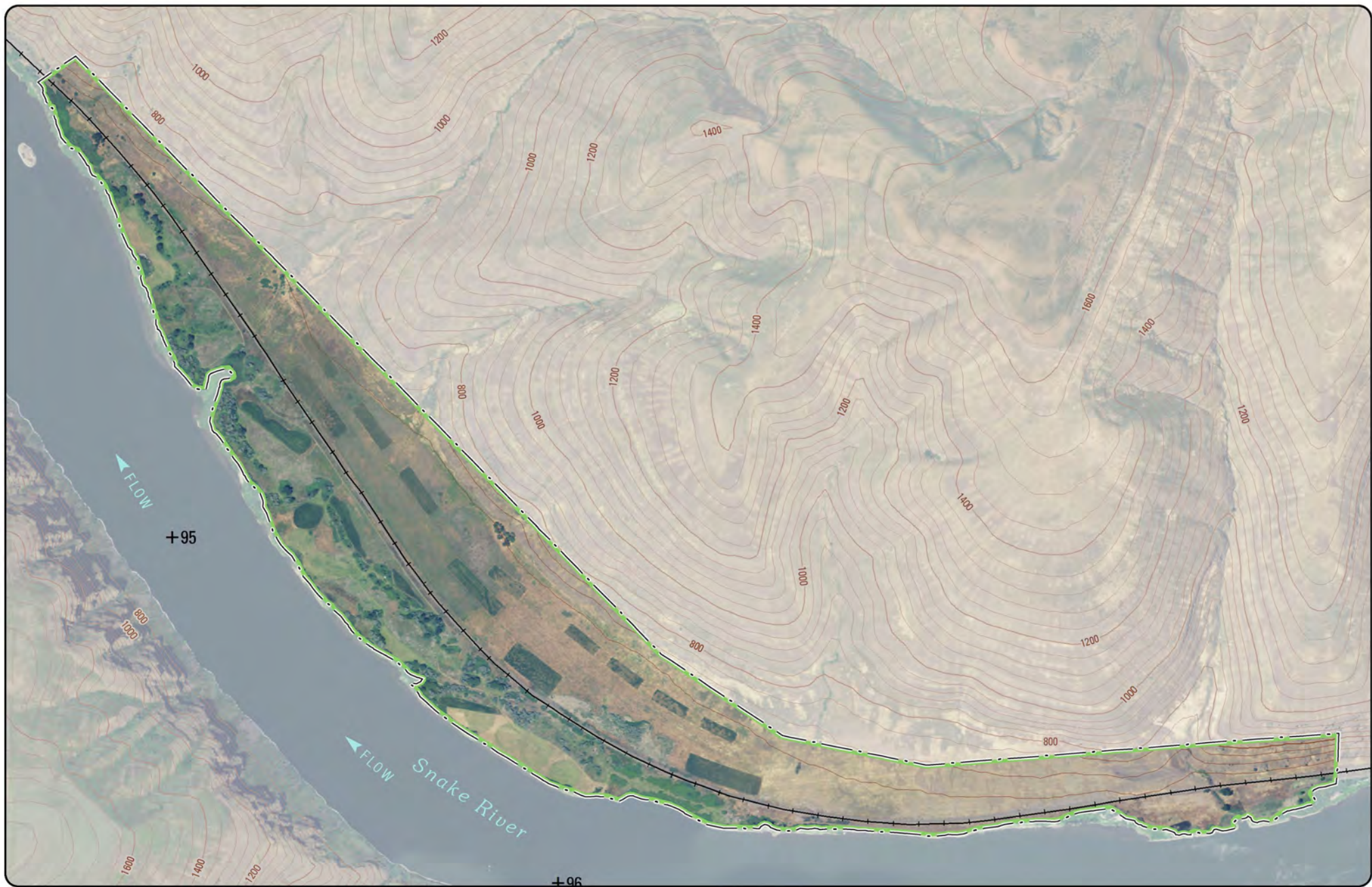


www.facebook.com/wallawallausace



US Army Corps
of Engineers®

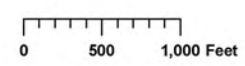




Swift Bar Habitat Management Unit



- Gate
- Ⓡ Kiosk
- + River Mile
- ▭ HMU Boundary
- ⓓ Dock
- Ⓟ Parking
- ♿ Restroom
- ▨ Restricted Area



Lon: -117.62 Lat: 46.68

BOAT ACCESS ONLY

[BACK TO INDEX](#)

Directions

From U.S. Highway 12, turn north onto Ledgerwood Road for 2.3 miles. Veer north onto Kirby-Mayview Road for 12 miles. At the “T” with North Deadman Road, continue north on Kirby-Mayview Road for 5.4 miles. The road name changes to Casey Canyon Road for an additional 5.5 miles to the river. Located at Snake River Mile 102 on the south riverbank of Lake Bryan.

Site Information

Approximately 474 acres, day-use area, vault toilet, primitive boat ramps, fishing, hiking, swimming, hunting, bird watching and wildlife viewing.

Rules and Regulations

- Rules and regulations under Title 36 apply on all Corps lands
- All Washington state hunting and fishing regulations are applicable
- Be aware that other visitors may be using hunting areas for different recreational activities
- Shotgun and archery hunting only
- Authorized vehicles only; no off-road, motorized vehicles
- Target, clay pigeon shooting and “plinking” are prohibited
- Pick up your litter when you leave ~ Pack It In, Pack It Out
- Open fires are prohibited
- Park in designated parking areas
- Camping is not allowed in parking areas or habitat management area
- Visitors are responsible for recognizing private land boundaries



Live to hunt
another day.

Think
SAFETY!

Contact Information

Natural Resources Management Office
Lower Granite Lock and Dam
U.S. Army Corps of Engineers
100 Fair Street
Clarkston, WA 99403

Phone: 509-751-0240

E-mail: corpsoutdoors@usace.army.mil

Website: www.nww.usace.army.mil

Dam-crossing information:

888-DAM-INFO (888-326-4636)

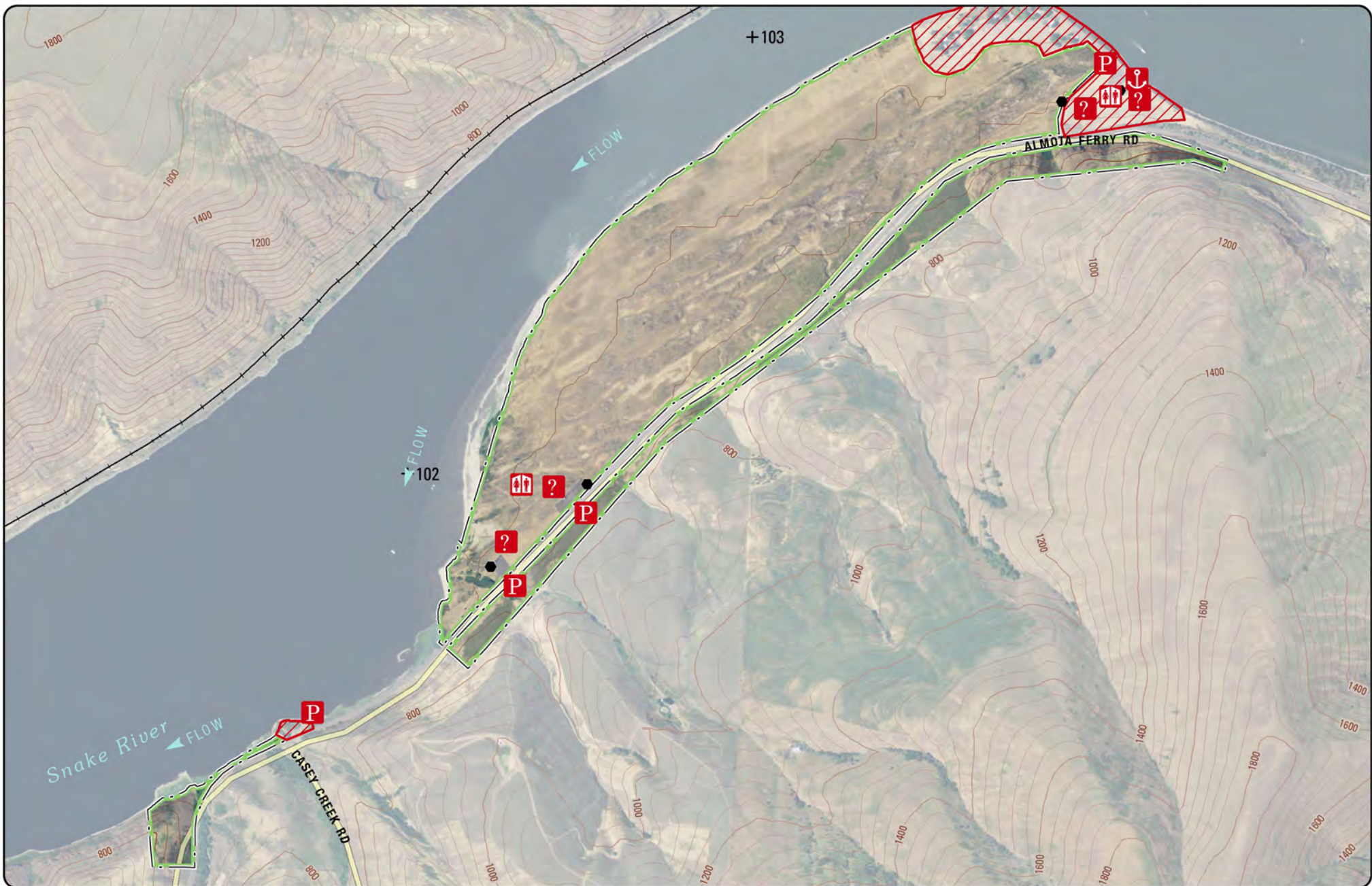


www.facebook.com/wallawallausace



**US Army Corps
of Engineers®**

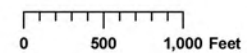




Illia Habitat Management Unit



- | | | | |
|------|---------|------------|-----------------|
| Gate | Kiosk | River Mile | HMU Boundary |
| Dock | Parking | Restroom | Restricted Area |



Lon: -117.48 Lat: 46.69

SHOTGUN AND ARCHERY ONLY

[BACK TO INDEX](#)

Direction (boat-access only)

Located at Snake River Mile 119 on the south riverbank of Lower Granite Lake. From Blyton Landing Boat Ramp (Whitman County): Boat upriver 0.5 miles.

Site Information

Approximately 457 acres, fishing, hunting, bird watching and wildlife viewing. Blyton Landing has vault toilets, camping and boat ramp.

Rules and Regulations

- Rules and regulations under Title 36 apply on all Corps lands
- All Washington state hunting and fishing regulations are applicable
- Be aware that other visitors may be using hunting areas for different recreational activities
- Authorized vehicles only; no off-road, motorized vehicles
- Target, clay pigeon shooting and “plinking” are prohibited
- Pick up your litter when you leave ~ Pack It In, Pack It Out
- Open fires are prohibited
- Camping is not allowed in habitat management area
- Visitors are responsible for recognizing private land boundaries



Contact Information

Natural Resources Management Office
Lower Granite Lock and Dam
U.S. Army Corps of Engineers
100 Fair Street
Clarkston, WA 99403

Phone: 509-751-0240

E-mail: corpsoutdoors@usace.army.mil

Website: www.nwww.usace.army.mil

Dam-crossing information:

888-DAM-INFO (888-326-4636)

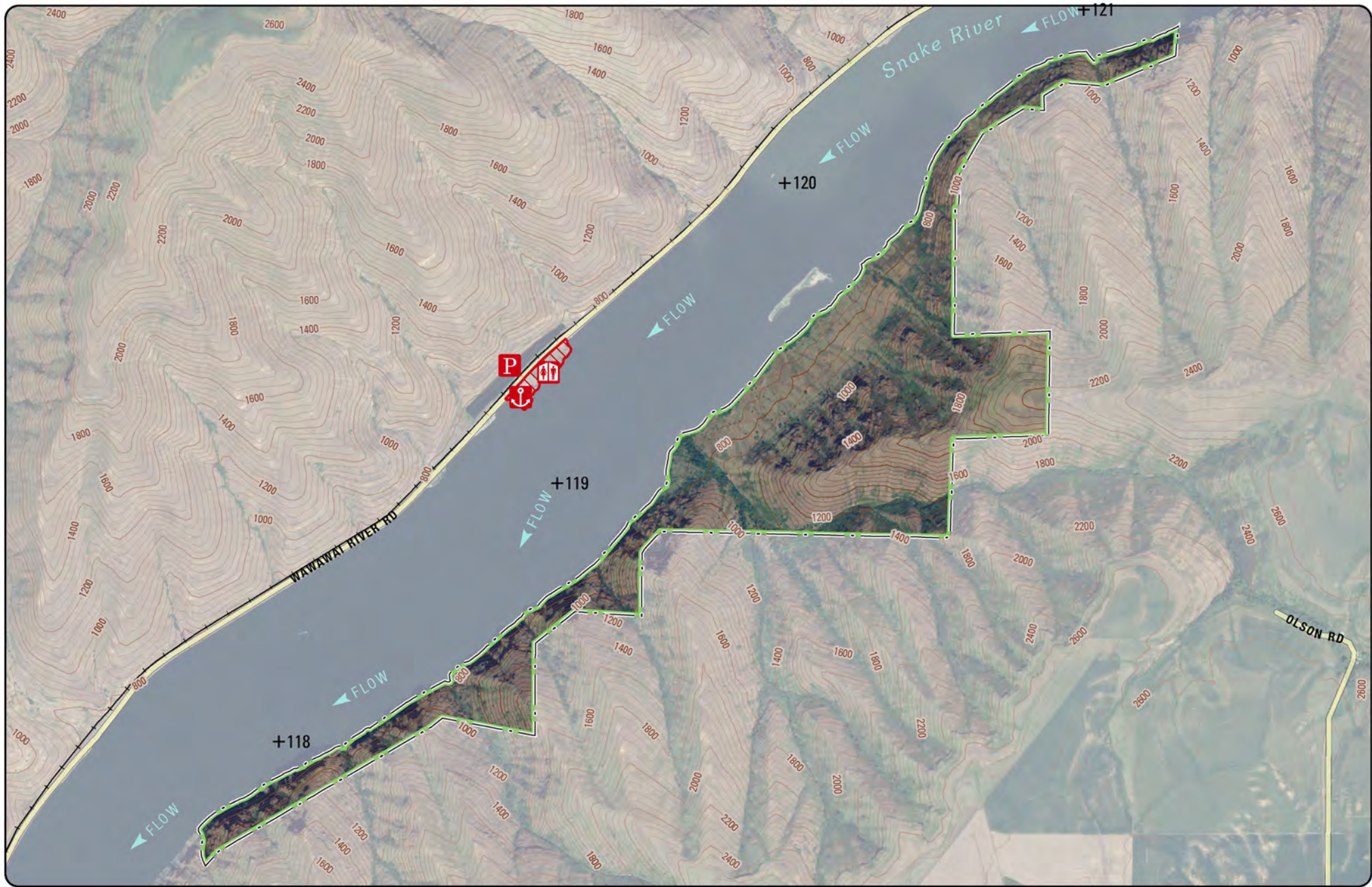


www.facebook.com/wallawallausace



US Army Corps
of Engineers®

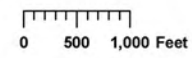




Kelly Bar Habitat Management Unit



- Gate
- Ⓜ Dock
- Ⓜ Kiosk
- Ⓜ Parking
- + River Mile
- Ⓜ Restroom
- ▭ HMU Boundary
- ▨ Restricted Area



Lon: -117.27 Lat: 46.55

BOAT ACCESS ONLY

[BACK TO INDEX](#)

Directions

From the intersection of state Highway 128 (Downriver Road), take Highway 193 (Wawawai Road) west for 8.5 miles. At the “Y” of Steptoe Canyon, turn west and continue for 4.7 miles. The parking area is near milepost 26. Located at Snake River Mile 123 on the north riverbank of Lower Granite Lake.

Site Information

Approximately 3,509 acres, day-use area, fishing, hiking, hunting, bird watching and wildlife viewing. Vault toilets, camping and boat ramps are available nearby at Blyton Landing and Nisqually John Landing.

Rules and Regulations

- Rules and regulations under Title 36 apply on all Corps lands
- All Washington state hunting and fishing regulations are applicable
- Be aware that other visitors may be using hunting areas for different recreational activities
- Authorized vehicles only; no off-road, motorized vehicles
- Target, clay pigeon shooting and “plinking” are prohibited
- Pick up your litter when you leave ~ Pack It In, Pack It Out
- Open fires are prohibited
- Park in designated parking areas
- Camping is not allowed in parking areas or habitat management area
- Visitors are responsible for recognizing private land boundaries



Contact Information

Natural Resources Management Office
Lower Granite Lock and Dam
U.S. Army Corps of Engineers
100 Fair Street
Clarkston, WA 99403

Phone: 509-751-0240

E-mail: corpsoutdoors@usace.army.mil

Website: www.nww.usace.army.mil

Dam-crossing information:

888-DAM-INFO (888-326-4636)

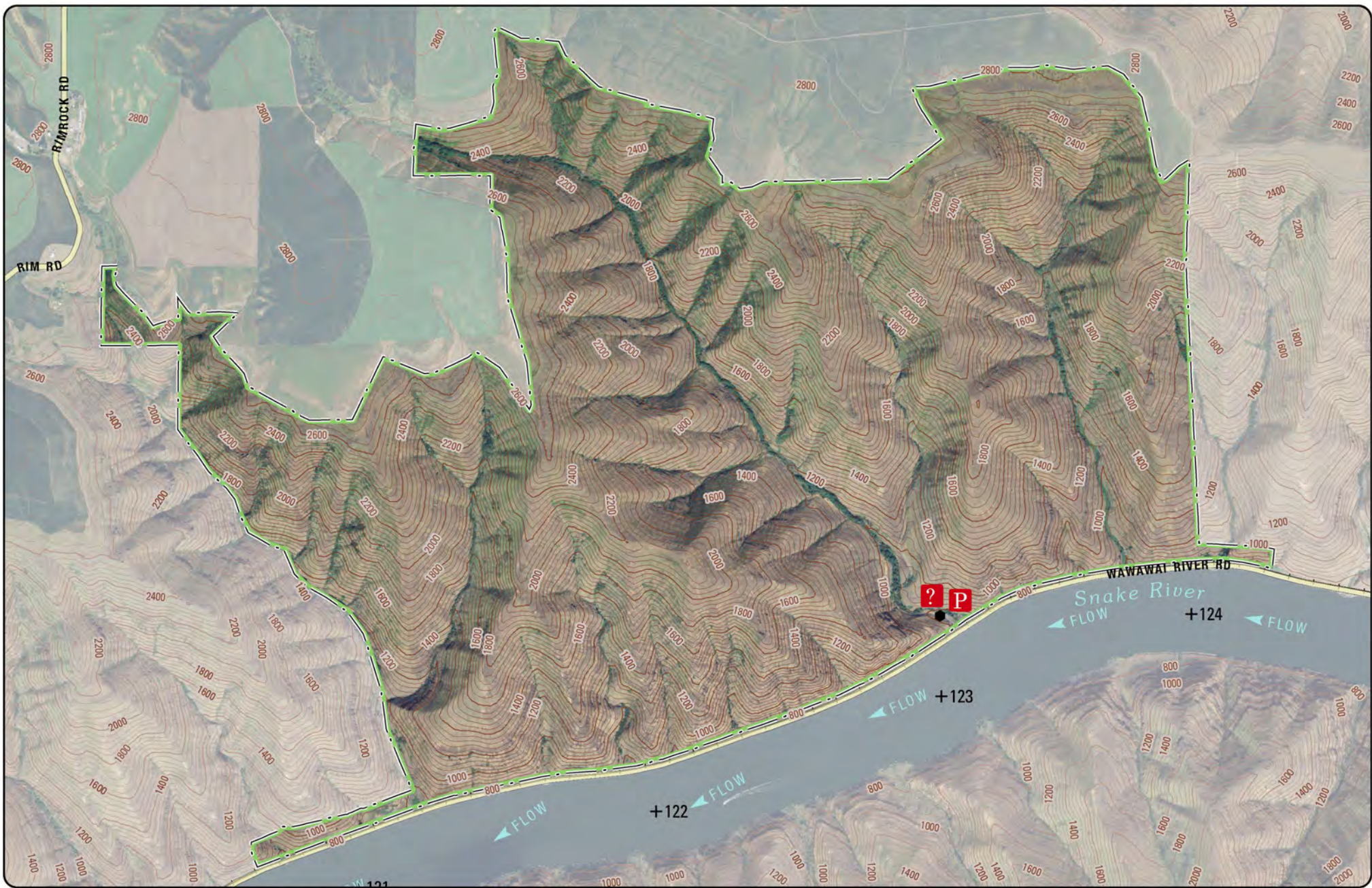


www.facebook.com/wallawallausace



US Army Corps
of Engineers®





Nisqually John Habitat Management Unit

- | | | | |
|--|---|--|---|
|  Gate |  Kiosk |  River Mile |  HMU Boundary |
|  Dock |  Parking |  Restroom |  Restricted Area |

0 500 1,000 Feet



Lon: -117.22 Lat: 46.52

[BACK TO INDEX](#)

Directions

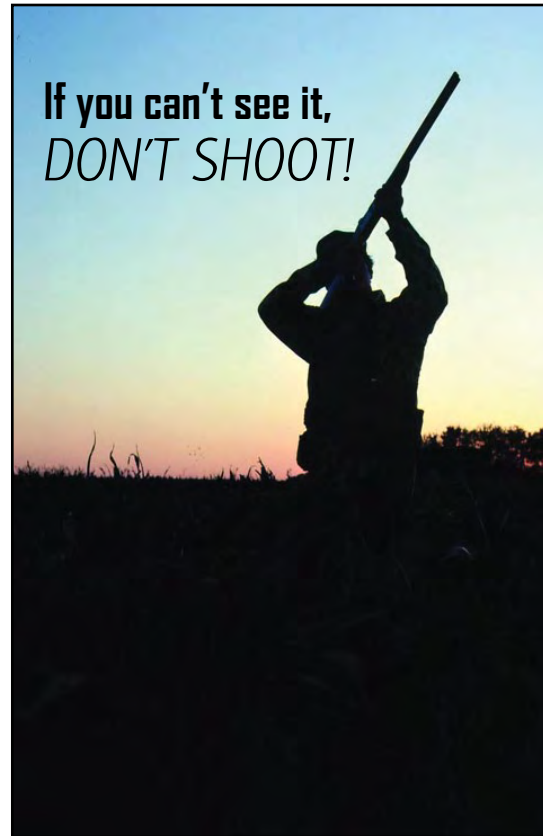
From the intersection of U.S. Highway 12 (Bridge Street) and state Highway 128 (Red Wolf Bridge), take Highway 12 west for 4.9 miles. The parking area is on the north side of the road near milepost 428. Located at Snake River Mile 132.5 on the south riverbank of Lower Granite Lake.

Site Information

Approximately 159 acres, day-use area, fishing, hiking, hunting, bird watching and wildlife viewing. Vault toilet, camping and boat ramp available nearby at Chief Timothy Park (open seasonally).

Rules and Regulations

- Rules and regulations under Title 36 apply on all Corps lands
- All Washington state hunting and fishing regulations are applicable
- Shotgun and archery hunting only
- Authorized vehicles only; no ATVs
- Target, clay pigeon shooting and “plinking” are prohibited
- Pick up your litter when you leave ~ Pack It In, Pack It Out
- Be aware that other visitors may be using hunting areas for different recreational activities
- Open fires are prohibited
- Park in designated parking areas
- Camping is not allowed in habitat management area
- Visitors are responsible for recognizing private land boundaries



Contact Information

Natural Resources Management Office
Lower Granite Lock and Dam
U.S. Army Corps of Engineers
100 Fair Street
Clarkston, WA 99403

Phone: 509-751-0240

E-mail: corpsoutdoors@usace.army.mil

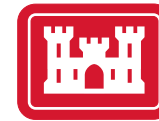
Website: www.nww.usace.army.mil

Dam-crossing information:

888-DAM-INFO (888-326-4636)



www.facebook.com/wallawallausace



US Army Corps
of Engineers®

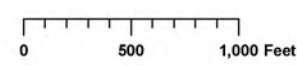




Chief Timothy Habitat Management Unit



- | | | | |
|------|---------|------------|-----------------|
| Gate | Kiosk | River Mile | HMU Boundary |
| Dock | Parking | Restroom | Restricted Area |



Lon: -117.17 Lat: 46.42

SHOTGUN AND ARCHERY ONLY

Directions

From the Southway Bridge in Lewiston, turn south onto Snake River Avenue and travel about 3 miles (becomes Tammany Creek Road). The parking area is on the west side of the road past the state park entrance. Located at Snake River Mile 145 on the east riverbank of Lower Granite Lake.

Site Information

Approximately 600 acres, day-use area, fishing, hiking, biking, hunting, bird watching and wildlife viewing, limited equestrian trails. Camping is available nearby at Hells Gate State Park.

Rules and Regulations

- Rules and regulations under Title 36 apply on all Corps lands
- All Idaho state hunting and fishing regulations are applicable
- Be aware that other visitors may be using hunting areas for different recreational activities
- Shotgun and archery hunting only
- Authorized vehicles only; no off-road, motorized vehicles
- Target, clay pigeon shooting and “plinking” are prohibited
- Pick up your litter when you leave ~ Pack It In, Pack It Out
- Open fires are prohibited
- Park in designated parking areas
- Camping is not allowed in parking areas or habitat management area
- Visitors are responsible for recognizing private land boundaries



Live to hunt
another day.

Think
SAFETY!

Contact Information

Natural Resources Management Office
Lower Granite Lock and Dam
U.S. Army Corps of Engineers
100 Fair Street
Clarkston, WA 99403

Phone: 509-751-0240

E-mail: corpsoutdoors@usace.army.mil

Website: www.nww.usace.army.mil

Dam-crossing information:

888-DAM-INFO (888-326-4636)

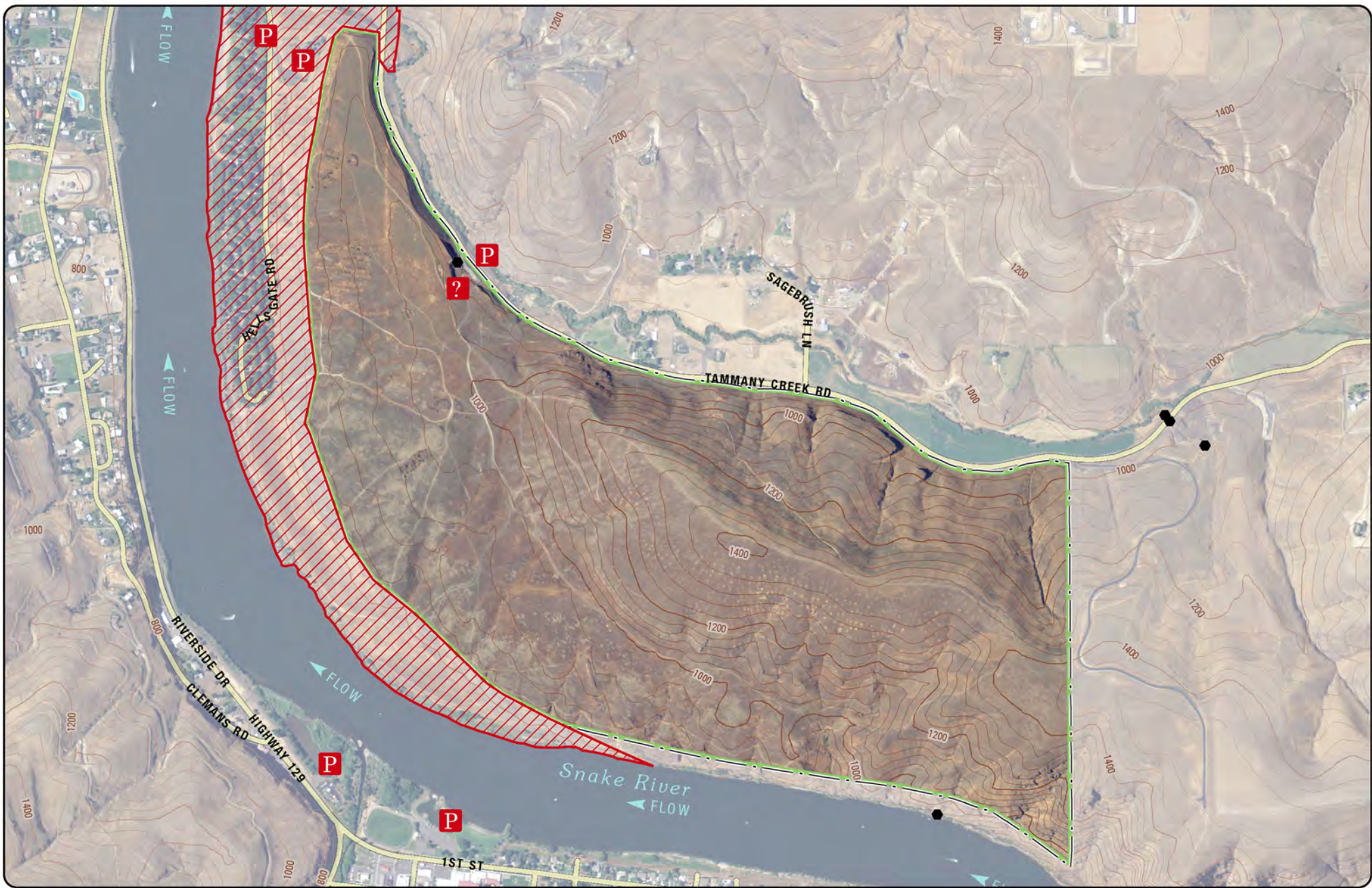


www.facebook.com/wallawallausace

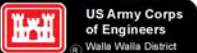


**US Army Corps
of Engineers®**

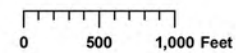




Hells Gate Habitat Management Unit



- | | | | |
|------|---------|------------|-----------------|
| Gate | Kiosk | River Mile | HMU Boundary |
| Dock | Parking | Restroom | Restricted Area |



Lon: -117.04 Lat: 46.35

SHOTGUN AND ARCHERY ONLY